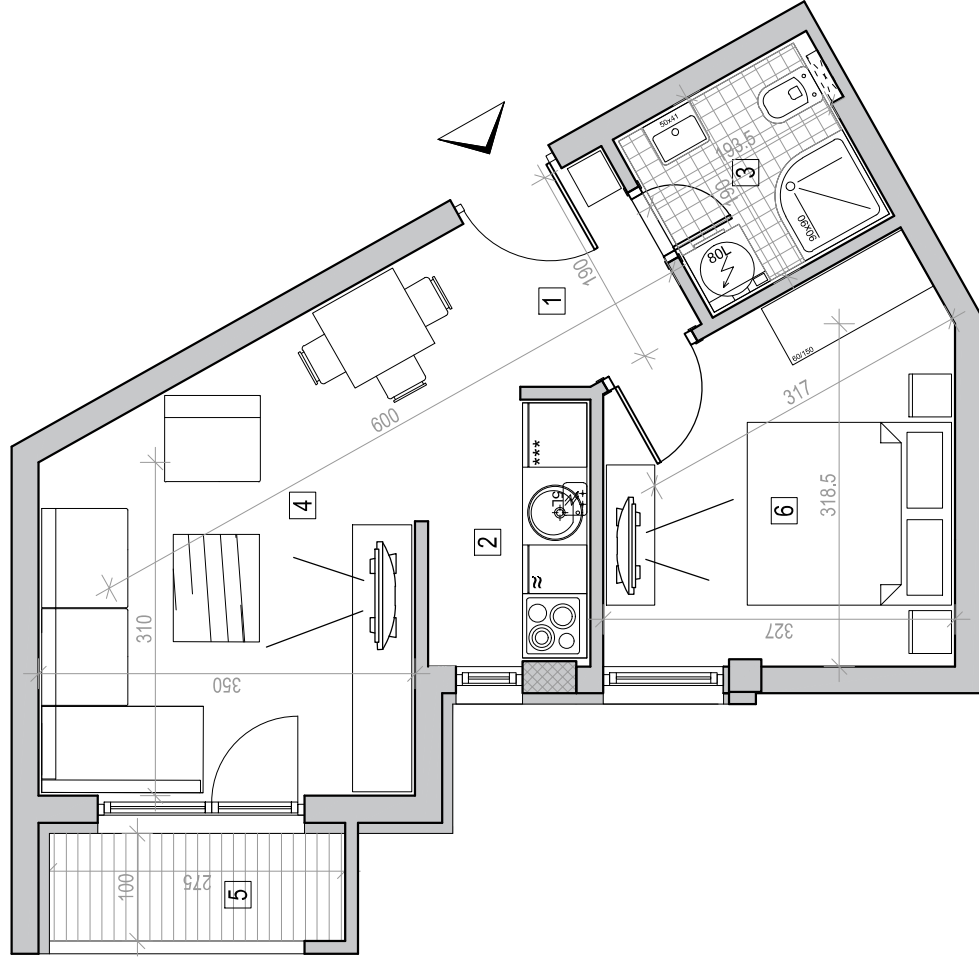


osnova stana br. 18

drugi sprat / P=39.60 m<sup>2</sup>



STAMBENA ZGRADA Su+P+3+Pk

Novi Sad, ul. Bele njive 35-37

kp 8642 i 8609



DRUGI SPRAT	
S T A N B R . 1 8	
br.	prostorija površina/m <sup>2</sup>
1	ULAZ 3.20
2	KUHINJA 3.26
3	KUPATILO 3.68
4	DN. SOBA 15.73
5	LOBA 2.75
6	SP. SOBA 10.98
<b>UKUPNO 39.60 m<sup>2</sup></b>	

