

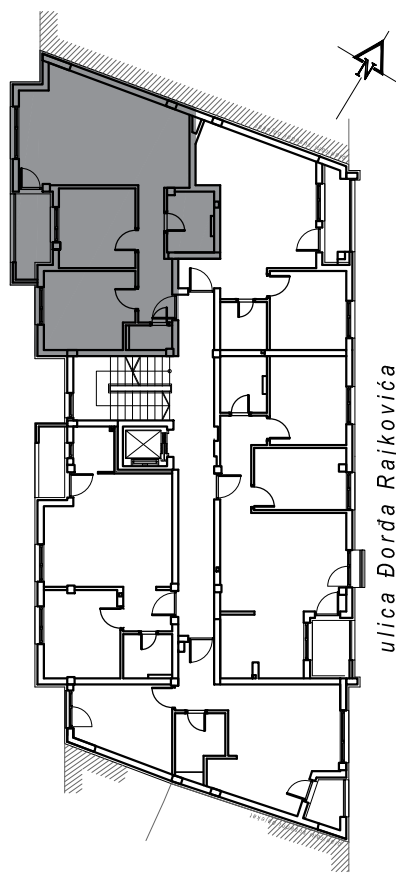
STAMBENA ZGRADA Su+P+3+Pk

Novi Sad, ul. Đorđa Rajkovića 21-23

kp 8610-1



| I SPRAT | |
|---------------|----------------------------|
| STAN BR. 06 | |
| br. | prostorija |
| 1 | ULAZ |
| 2 | KUHINJA |
| 3 | KUPATILO |
| 4 | DN. SOBA |
| 5 | LOBA |
| 6 | WC |
| 7 | SP. SOBA |
| 8 | SP. SOBA |
| UKUPNO | |
| | 65.90 m² |
| | -3% |



ulica Đorđa Rajkovića

osnova stana br. 06

I SPRAT/ P=65.90 m²

