

STAMBENA ZGRADA Su+P+3+Pk

Novi Sad, ul. Đorđa Rajkovića 21-23

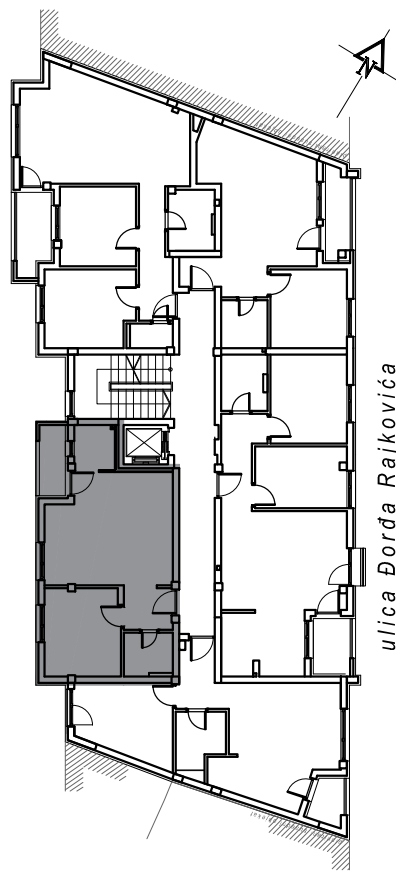
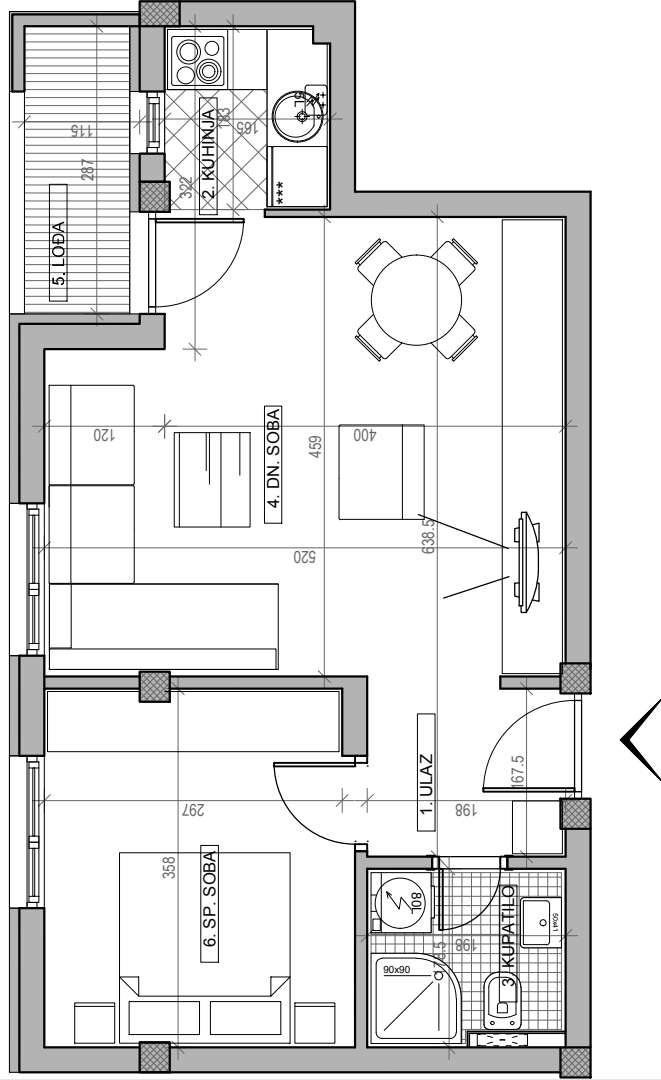
kp 8610-1



I SPRAT		
STAN BR. 10		
br.	prostorija	površina/m ²
1	ULAZ	3.54
2	KUHINJA	3.02
3	KUPATILO	3.53
4	DN. SOBA	22.28
5	LOBA	3.01
6	SP. SOBA	11.01
UKUPNO		46.39 m²
		-3%
		45.00 m²

osnova stana br. 10

I SPRAT/ P=46.39 m²



ulica Đorđa Rajkovića