

STAMBENA ZGRADA Su+P+3+Pk

Novi Sad, ul. Đorđa Rajkovića 21-23

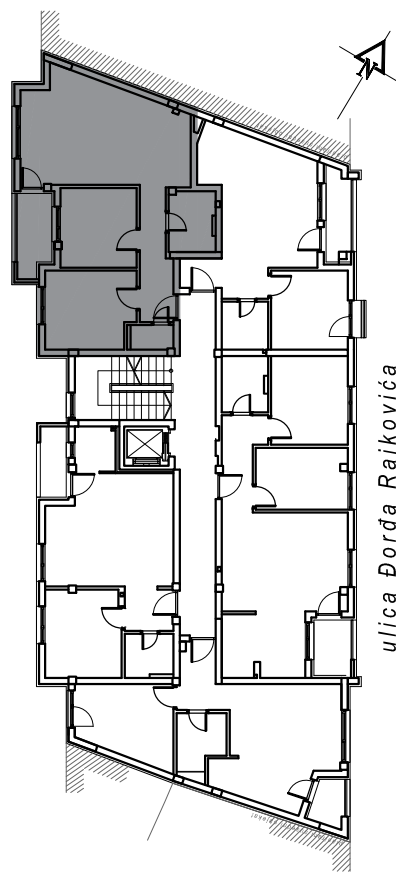
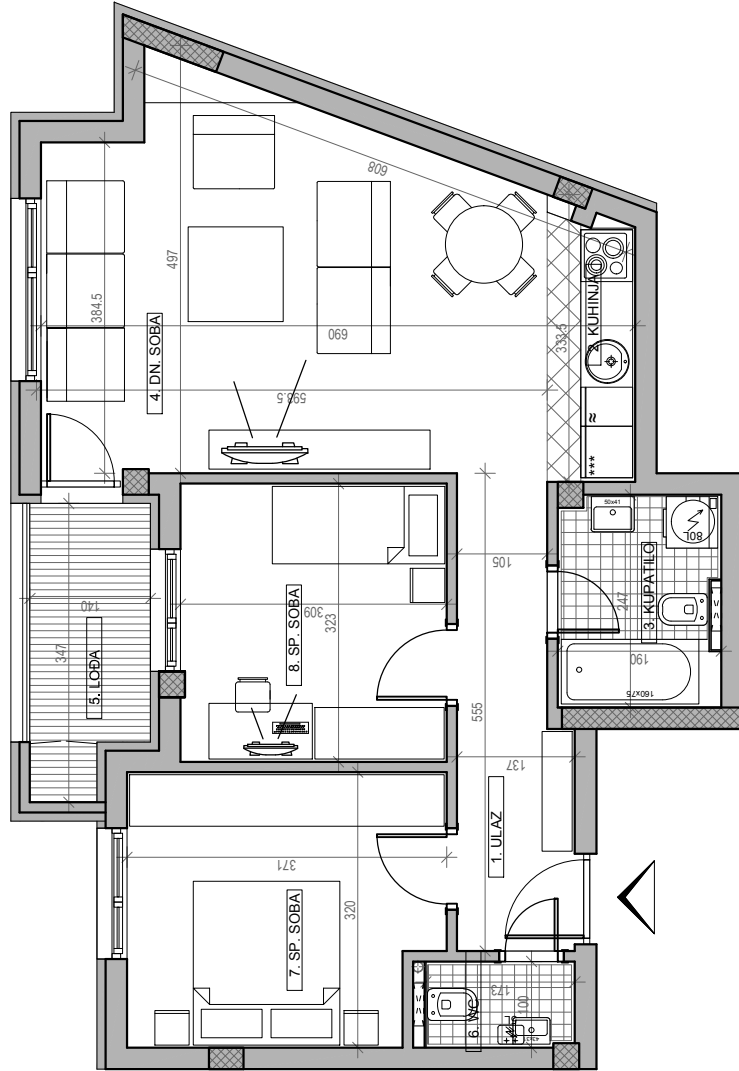
kp 8610-1



II SPRAT		
STAN	BR. 11	
br.	prostorija	površina/m ²
1	ULAZ	6.64
2	KUHINJA	3.01
3	KUPATILO	4.69
4	DN. SOBA	23.98
5	LOBA	4.42
6	WC	1.88
7	SP. SOBA	11.30
8	SP. SOBA	9.98
UKUPNO		65.90 m²
		-3%
		63.92 m²

osnova stana br. 11

II SPRAT/ P=65.90 m²



ulica Đorđa Rajkovića