

## STAMBENA ZGRADA Su+P+3+Pk

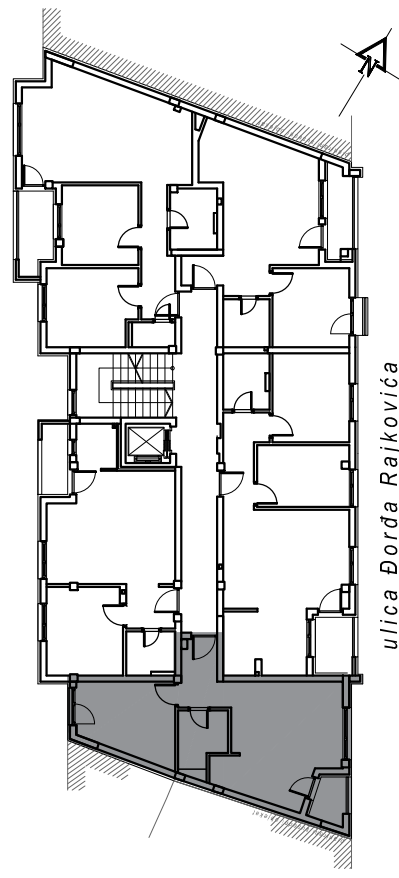
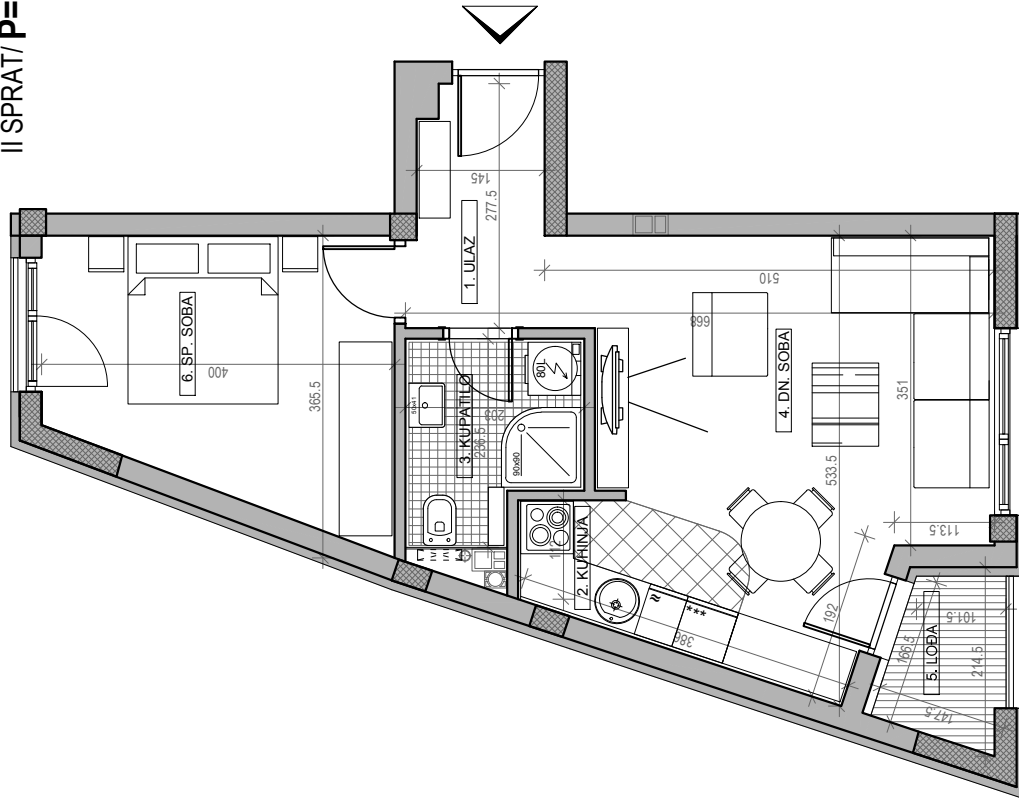
Novi Sad, ul. Đorđa Rajkovića 21-23

kp 8610-1



II SPRATE	
STAN BR. 14	
br.	prostorija površina/m <sup>2</sup>
1	ULAZ 4.02
2	KUHINJA 3.61
3	KUPATILO 4.24
4	DN. SOBA 18.26
5	LOBA 2.33
6	SP. SOBA 11.61
<b>UKUPNO 44.07 m<sup>2</sup></b>	
	-3%
	<b>42.75 m<sup>2</sup></b>

osnova stana br. 14  
 II SPRAT/ **P=44.07 m<sup>2</sup>**



ulica Đorđa Rajkovića