

STAMBENA ZGRADA Su+P+3+Pk

Novi Sad, ul. Đorđa Rajkovića 21-23

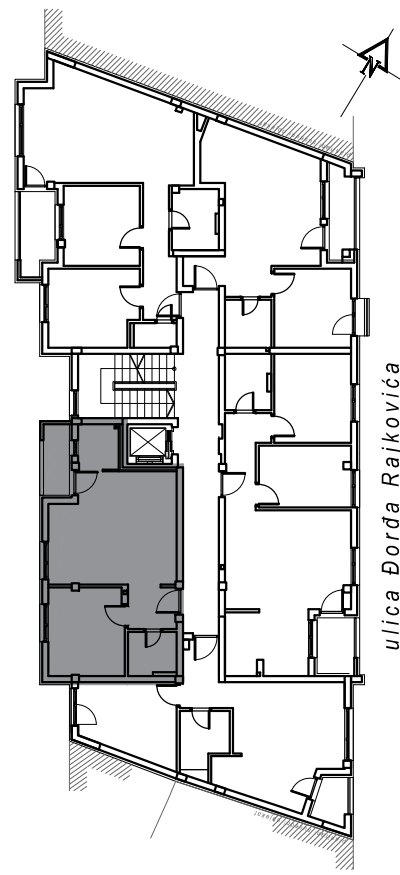
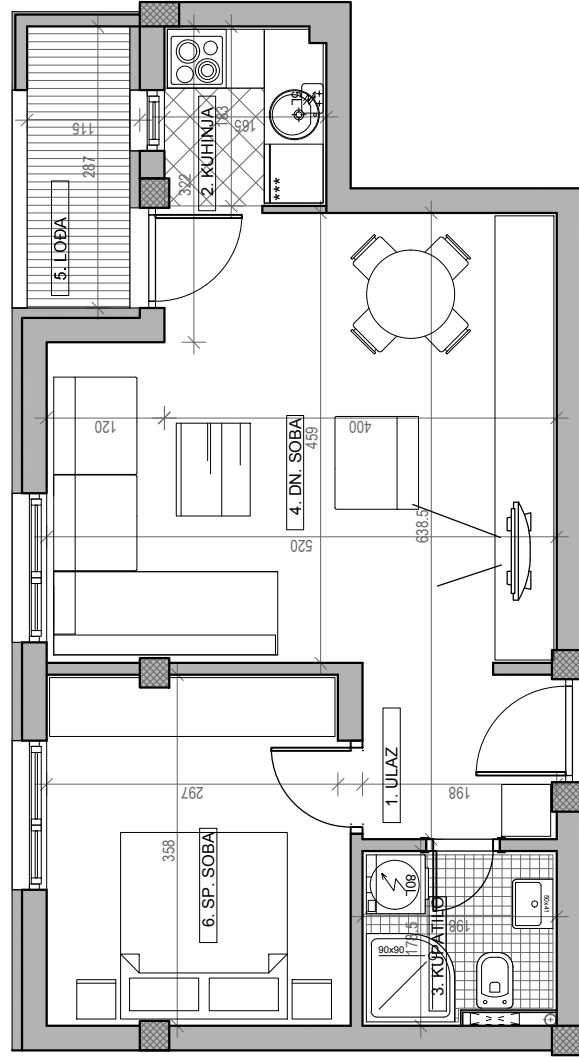
kp 8610-1



II SPRAT	
STAN BR. 15	
br.	prostorija
1	ULAZ
2	KUHINJA
3	KUPATILO
4	DN. SOBA
5	LOBA
6	SP. SOBA
UKUPNO	
	46.39 m²
	-3%
	45.00 m²

osnova stana br. 15

II SPRAT/ P=46.39 m²



ulica Đorđa Rajkovića