

STAMBENA ZGRADA Su+P+3+Pk

Novi Sad, ul. Đorđa Rajkovića 21-23

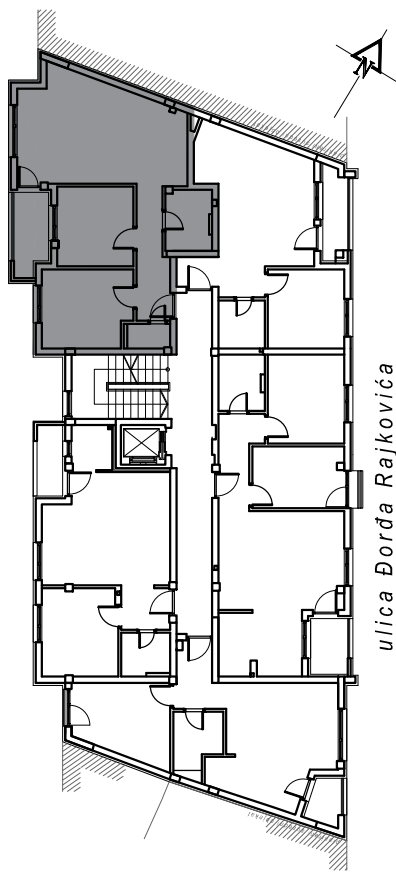
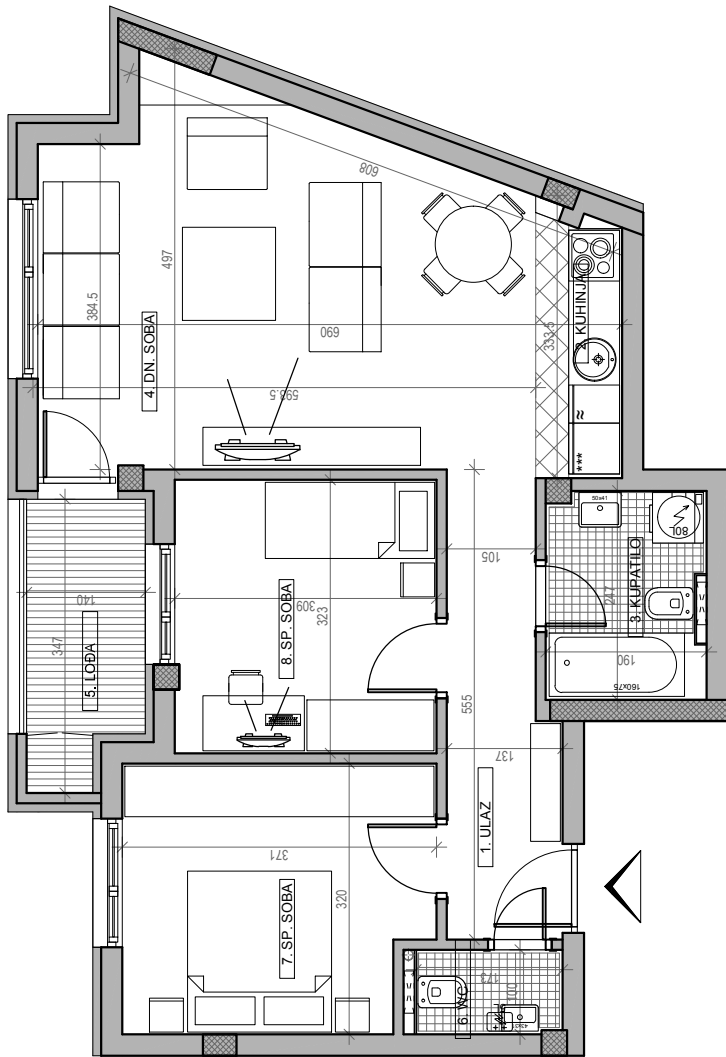
kp 8610-1



III SPRAT	
STAN BR. 16	
br.	prostorija površina/m ²
1	ULAZ 6.64
2	KUHINJA 3.01
3	KUPATILO 4.69
4	DN. SOBA 23.98
5	LOBA 4.42
6	WC 1.88
7	SP. SOBA 11.30
8	SP. SOBA 9.98
UKUPNO 65.90 m²	
-3%	

osnova stana br. 16

III SPRAT/ P=65.90 m²



ulica Đorđa Rajkovića