

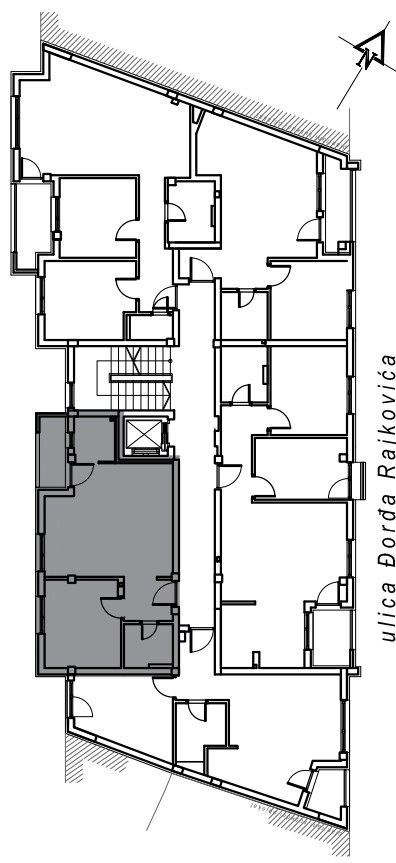
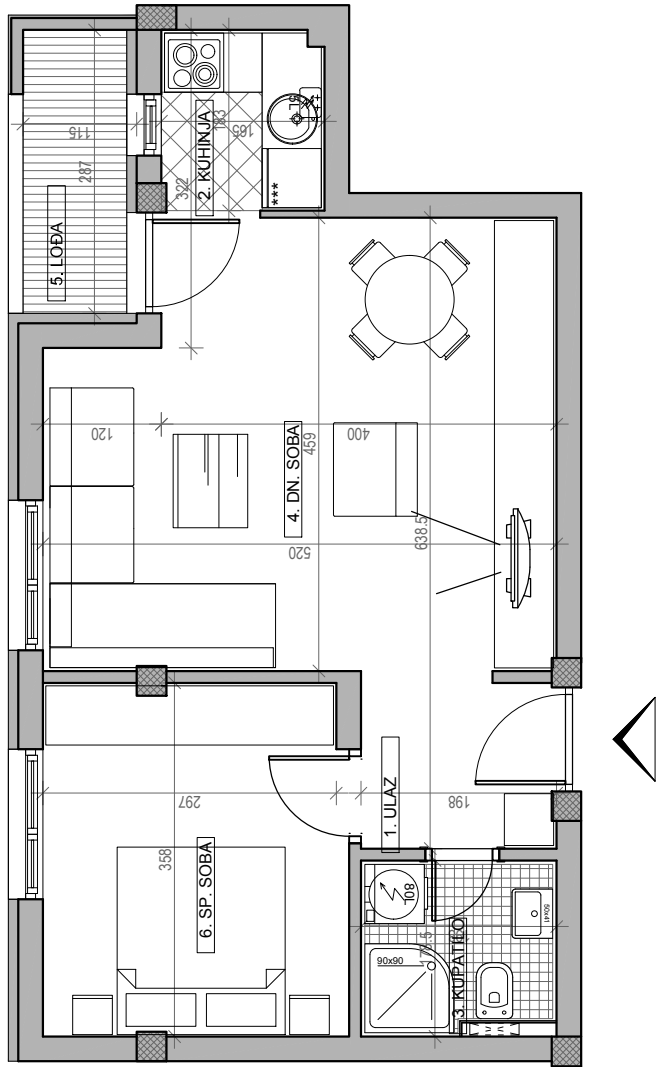
## STAMBENA ZGRADA Su+P+3+Pk

Novi Sad, ul. Đorđa Rajkovića 21-23  
 kp 8610-1



III SPRAT	
STAN BR. 20	
br.	prostorija površina/m <sup>2</sup>
1	ULAZ 3.54
2	KUHINJA 3.02
3	KUPATILO 3.53
4	DN. SOBA 22.28
5	LOBA 3.01
6	SP. SOBA 11.01
<b>UKUPNO 46.39 m<sup>2</sup></b>	
-3%	
<b>45.00 m<sup>2</sup></b>	

osnova stana br. 20  
 III SPRAT/ **P=46.39 m<sup>2</sup>**



ulica Đorđa Rajkovića