

STAMBENA ZGRADA Su+P+3+Pk

Novi Sad, ul. Đorđa Rajkovića 21-23

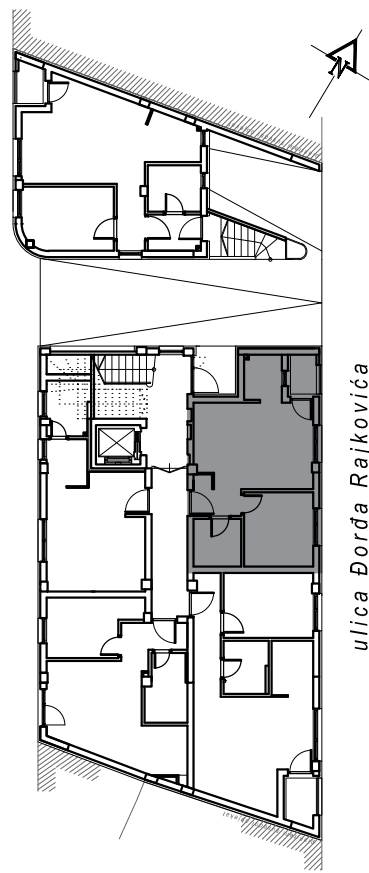
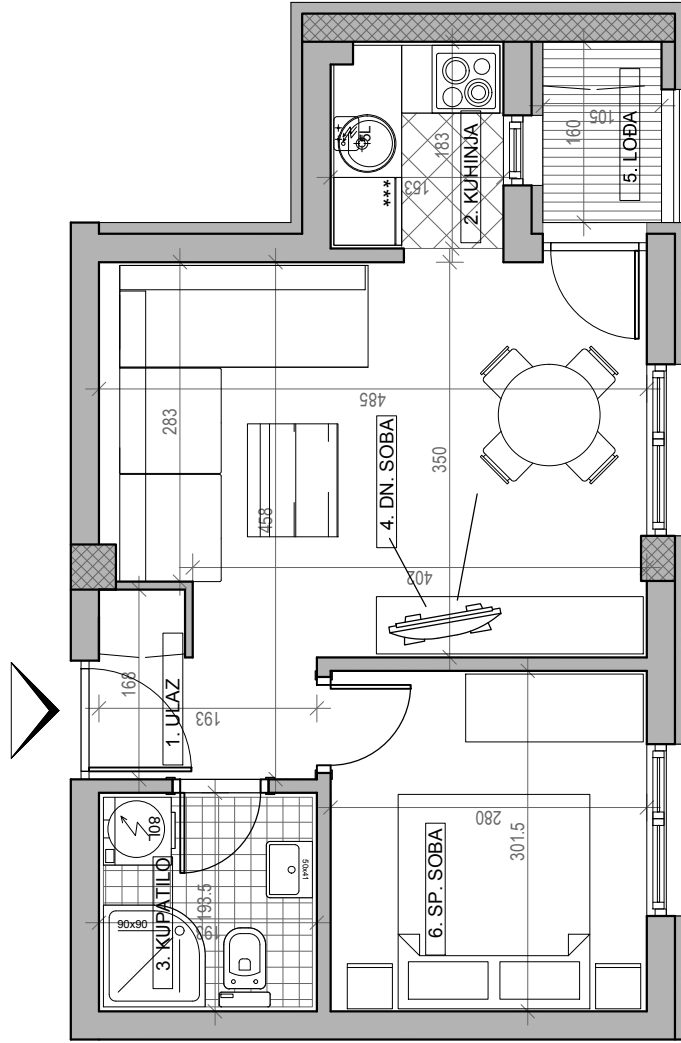
kp 8610-1



PRIZEMLJE		
STAN	BR. 02	
br.	prostorija	površina/m ²
1	ULAZ	2.53
2	KUHINJA	2.76
3	KUPATILO	3.74
4	DN. SOBA	16.37
5	LOBA	1.68
6	SP. SOBA	8.45
UKUPNO		35.53 m²
		-3%
		34.46 m²

osnova stana br. 02

PRIZEMLJE / P=35.53 m²



ulica Đorđa Rajkovića