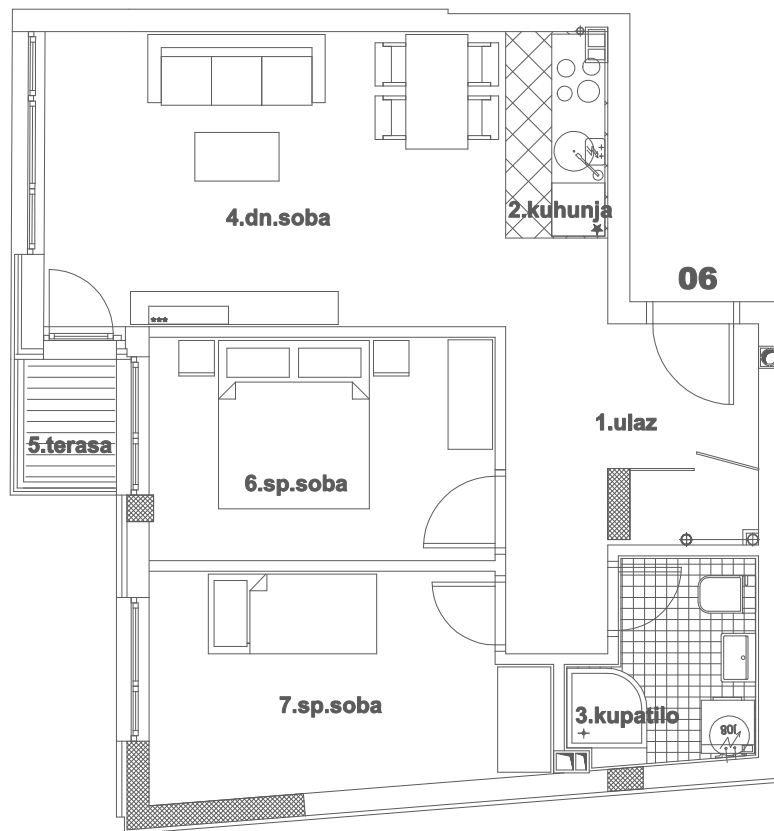
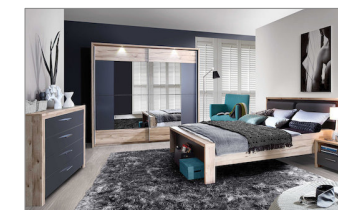


OSNOVA STANA BR.06
I SPRAT / P=55,57m²

STAMBENA ZGRADA Su+P+4+Pk i Su+P+1+Pk
Novi Sad, ul.Gundulićeva 30-32
k.p.8709/1 Novi Sad I



I SPRAT STAN BROJ 06		
br.	prostorija	površina m ²
1	ULAZ	9,39
2	KUHINJA	2,68
3	KUPATILO	4,36
4	DN.SOBA	17,33
5	TERASA	1,44
6	SP.SOBA	9,82
7	SP.SOBA	10,55
UKUPNO:		55,57



OSNOVA I SPRATA

