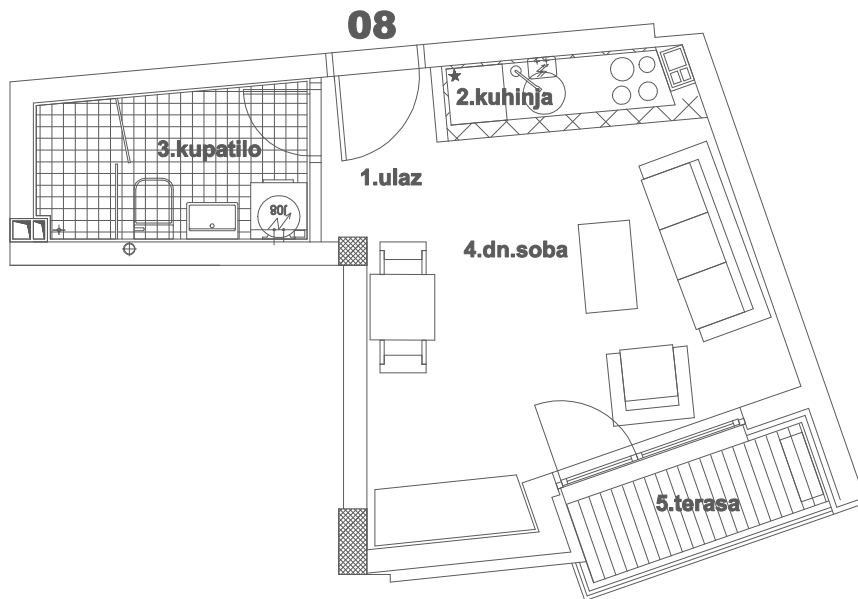
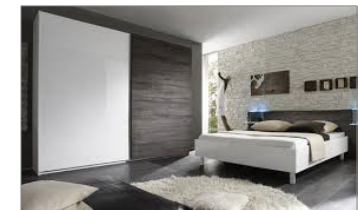


OSNOVA STANA BR.08
I SPRAT / P=26,13m²

STAMBENA ZGRADA Su+P+4+Pk i Su+P+1+Pk
Novi Sad, ul.Gundulićeva 30-32
k.p.8709/1 Novi Sad I



I SPRAT		
STAN BROJ 08		
br.	prostorija	površina m ²
1	ULAZ	1,77
2	KUHINJA	2,03
3	KUPATILO	4,73
4	DN.SOBA	15,24
5	TERASA	2,36
UKUPNO:		26,13



OSNOVA I SPRATA

