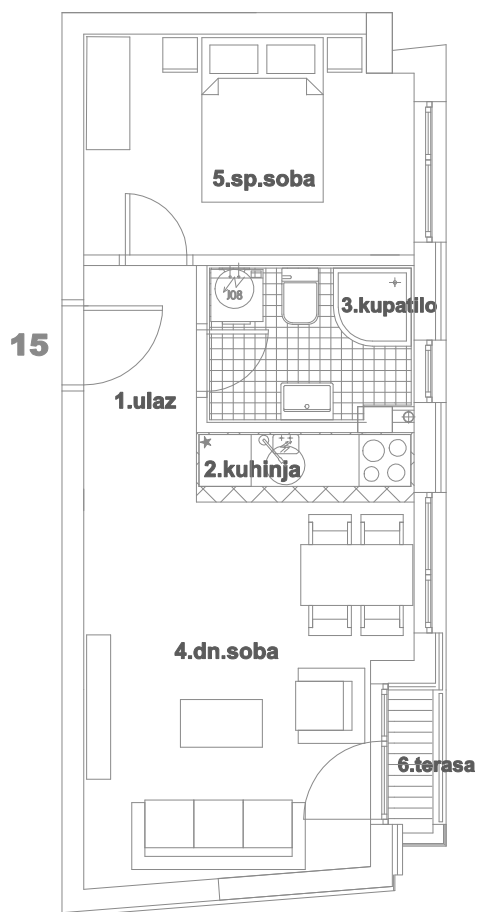
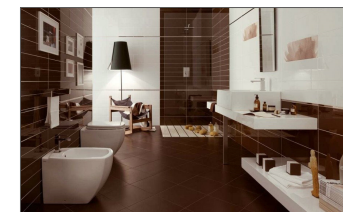
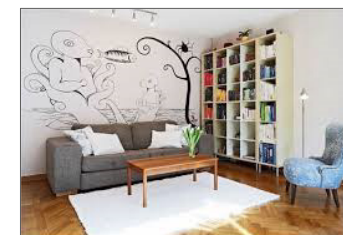


OSNOVA STANA BR.15
III SPRAT / P=35,11m²

STAMBENA ZGRADA Su+P+4+Pk i Su+P+1+Pk
Novi Sad, ul.Gundulićeva 30-32
k.p.8709/1 Novi Sad I



III SPRAT		
STAN BROJ 15		
br.	prostorija	površina m ²
1	ULAZ	2,51
2	KUHINJA	2,01
3	KUPATILO	4,23
4	DN.SOBA	16,31
5	TERASA	0,58
6	SP.SOBA	9,47
UKUPNO:		35,11



OSNOVA III SPRATA

