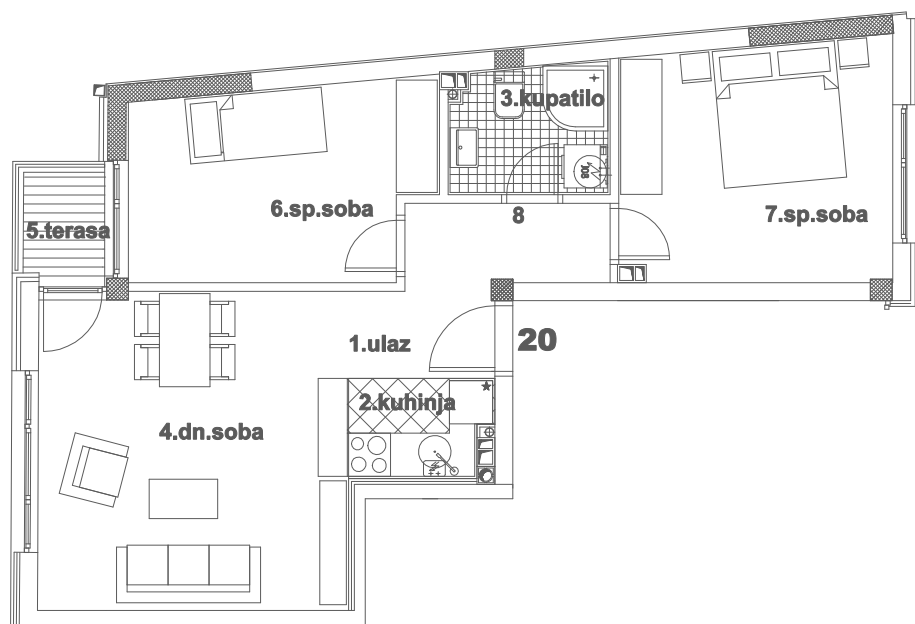
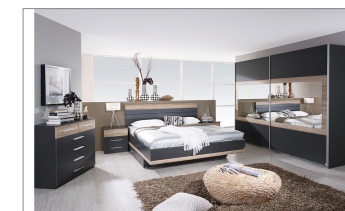
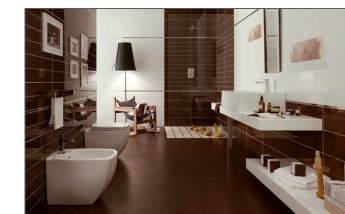
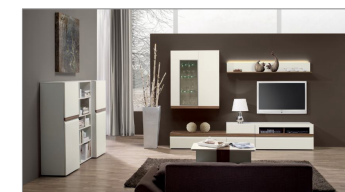


OSNOVA STANA BR.20
IV SPRAT / P=56,06m²

STAMBENA ZGRADA Su+P+4+Pk i Su+P+1+Pk
Novi Sad, ul.Gundulićeva 30-32
k.p.8709/1 Novi Sad I



IV SPRAT		
STAN BROJ 20		
br.	prostorija	površina m ²
1	ULAZ	2,59
2	KUHINJA	2,63
3	KUPATILO	3,91
4	DN.SOBA	18,92
5	TERASA	1,58
6	SP.SOBA	10,91
7	SP.SOBA	12,40
8	DEGAŽMAN	3,12
UKUPNO:		56,06



OSNOVA III SPRATA

