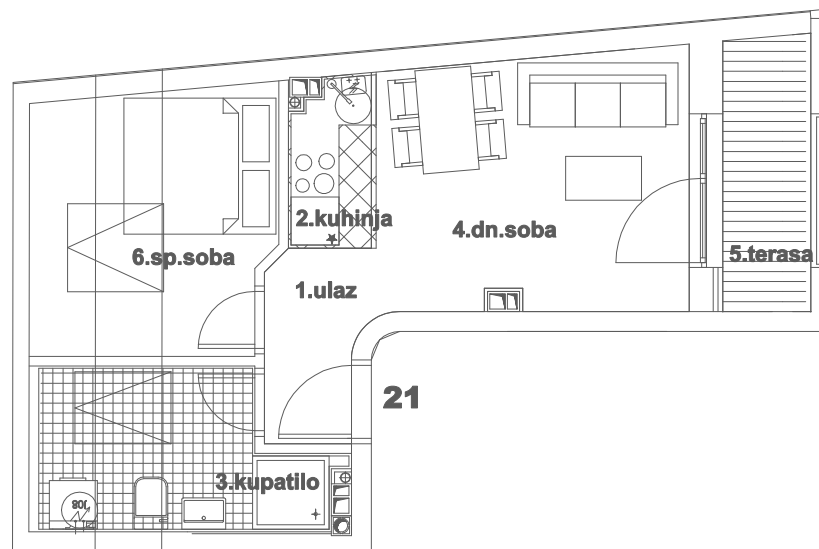


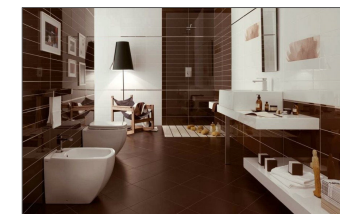
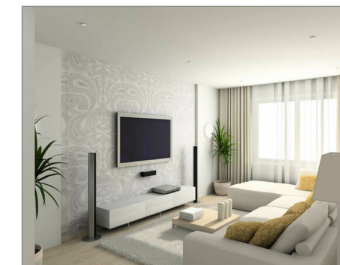
OSNOVA STANA BR.21
POTKROVLJE / P=33,54m²



STAMBENA ZGRADA Su+P+4+Pk i Su+P+1+Pk
Novi Sad, ul.Gundulićeva 30-32
k.p.8709/1 Novi Sad I



POTKROVLJE		
STAN BROJ 21		
br.	prostorija	površina m ²
1	ULAZ	3,02
2	KUHINJA	2,09
3	KUPATILO	5,11
4	DN.SOBA	12,28
5	TERASA	3,78
6	SP.SOBA	7,26
UKUPNO:		33,54



OSNOVA II SPRATA

