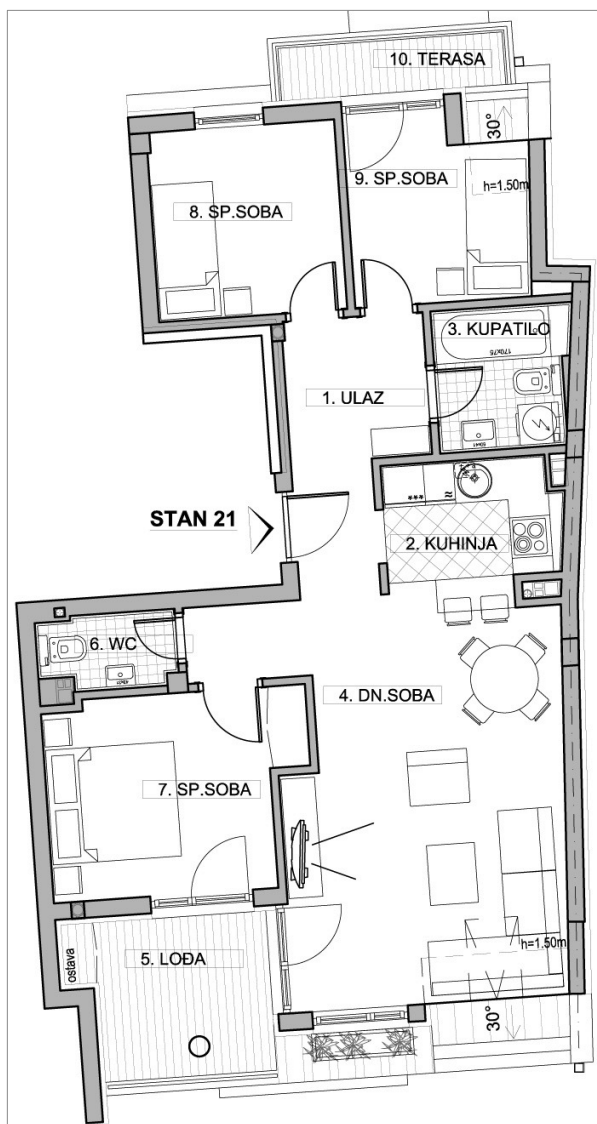


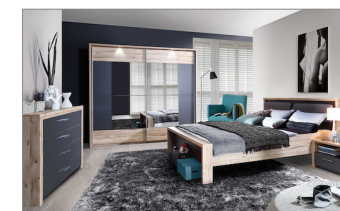
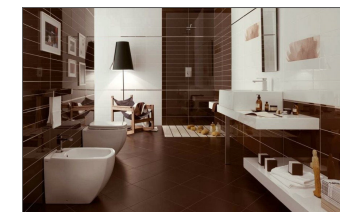
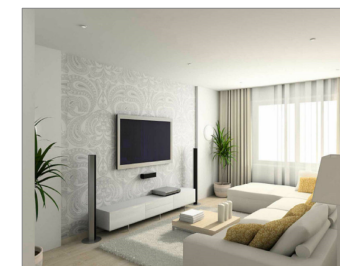
**OSNOVA STANA BR.21**  
**POTKROVLJE / P=79,44m<sup>2</sup>**



**STAMBENA ZGRADA P+3+PK**  
 Novi Sad, ul.Jaše Ignjatovića 1  
 k.p.8574/1 Novi Sad I



| POTKROVLJE   |            |                         |
|--------------|------------|-------------------------|
| STAN BROJ 21 |            |                         |
| br.          | prostorija | površina m <sup>2</sup> |
| 1            | ULAZ       | 7,35                    |
| 2            | KUHINJA    | 5,28                    |
| 3            | KUPATILO   | 3,78                    |
| 4            | DN.SOBA    | 25,11                   |
| 5            | LOĐA       | 7,22                    |
| 6            | WC         | 1,92                    |
| 7            | SP.SOBA    | 10,41                   |
| 8            | SP.SOBA    | 8,36                    |
| 9            | SP.SOBA    | 6,61                    |
| 10           | TERASA     | 3,40                    |
| UKUPNO:      |            | 79,44                   |



POTKROVLJE / položaj stana u zgradi

