

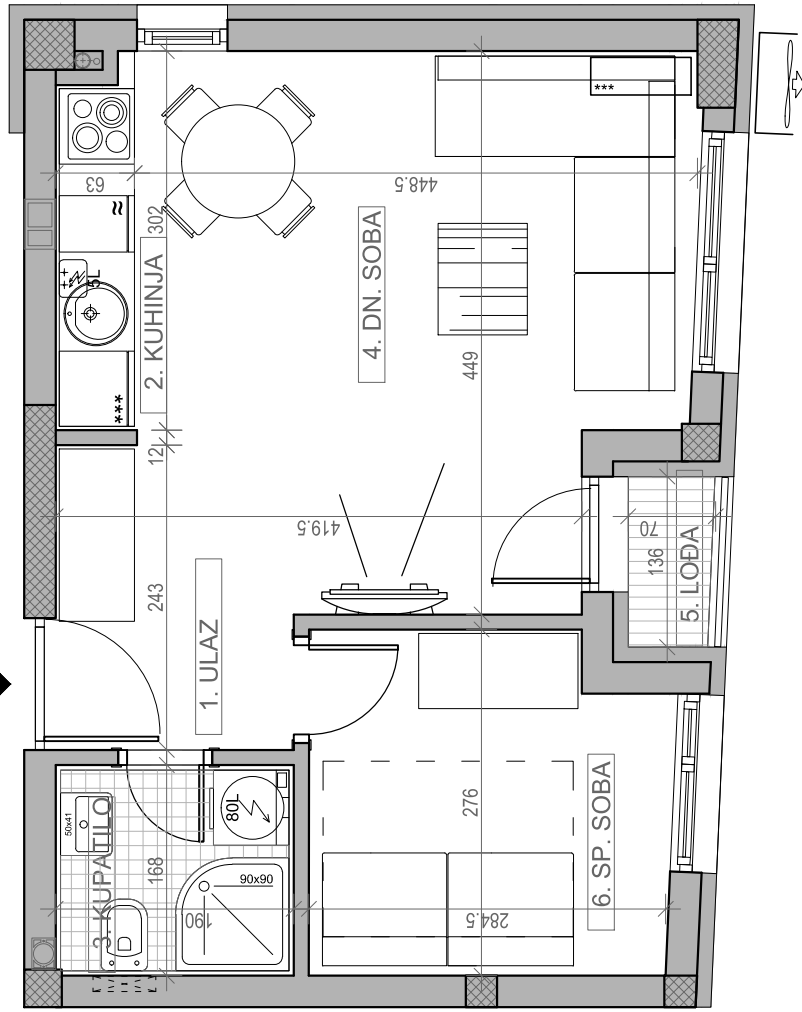
STAMBENA ZGRADA Su+P+3+Pk

Novi Sad, ul. Jaše Ignjatovića 11-13

kp 8582

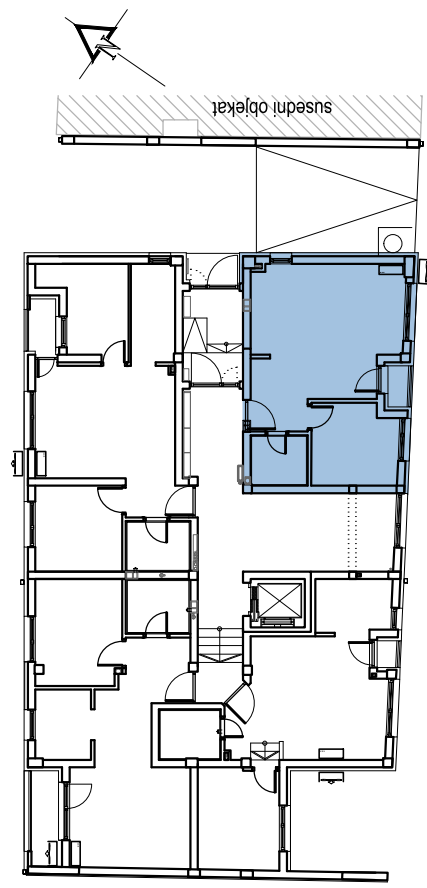
osnova stana br. 01 PRIZEMLJE / P=35.04 m²

P= 35.04 m²
P_{-3%} = 33.99 m²



| PRIZEMLJE | | |
|---------------|------------|----------------------------|
| STAN BR. 01 | | |
| br. | prostorija | površina/m ² |
| 1 | ULAZ | 2.05 |
| 2 | KUHINJA | 1.79 |
| 3 | KUPATILO | 3.19 |
| 4 | DN. SOBA | 19.49 |
| 5 | LOBA | 0.90 |
| 6 | SP. SOBA | 7.62 |
| UKUPNO | | 35.04 m² |
| | | -3% |
| | | 33.99 m² |

dvoriste



ul. Jaše Ignjatovića