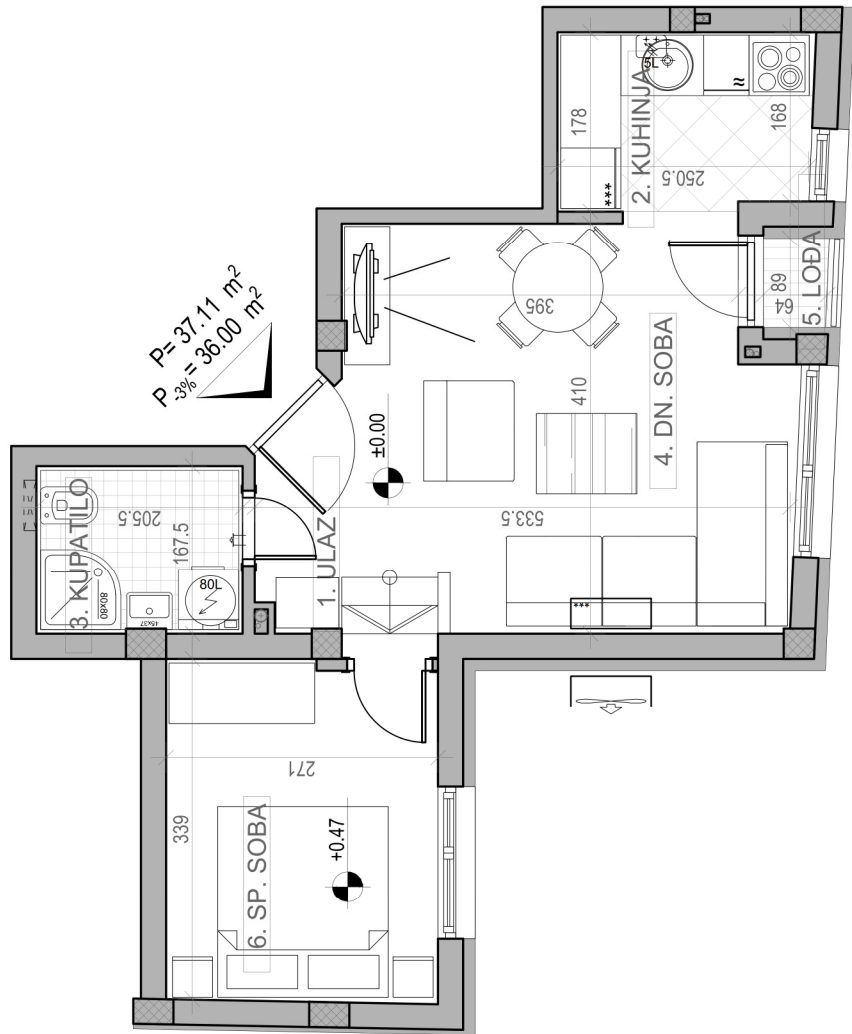


STAMBENA ZGRADA Su+P+3+Pk

Novi Sad, ul. Jaše Ignjatovića 11-13

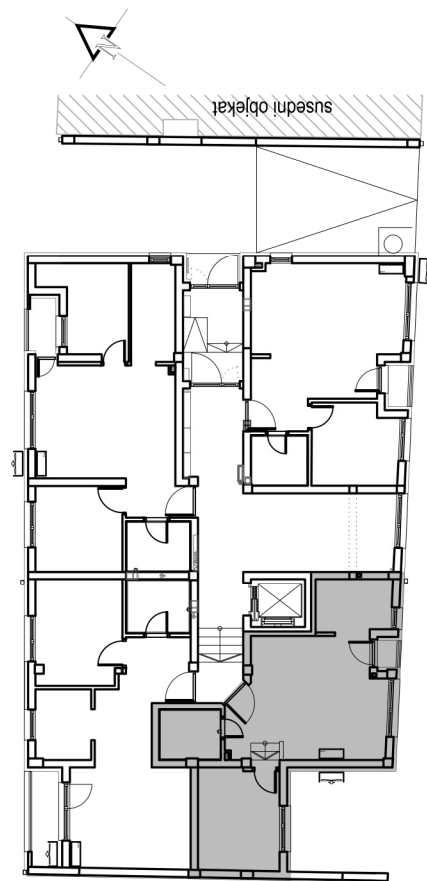
kp 8582

osnova stana br. 02
PRIZEMLJE / **P=37.11 m²**



PRIZEMLJE		
STAN BR. 02		
br.	prostorija	površina/m ²
1	ULAZ	1.81
2	KUHINJA	4.54
3	KUPATILO	3.37
4	DN. SOBA	17.73
5	LODA	0.57
6	SP. SOBA	9.09
UKUPNO		37.11 m²
		-3%
		36.00 m²

dvorište



ul. Jaše Ignjatovića