

# STAMBENA ZGRADA Su+P+3+Pk

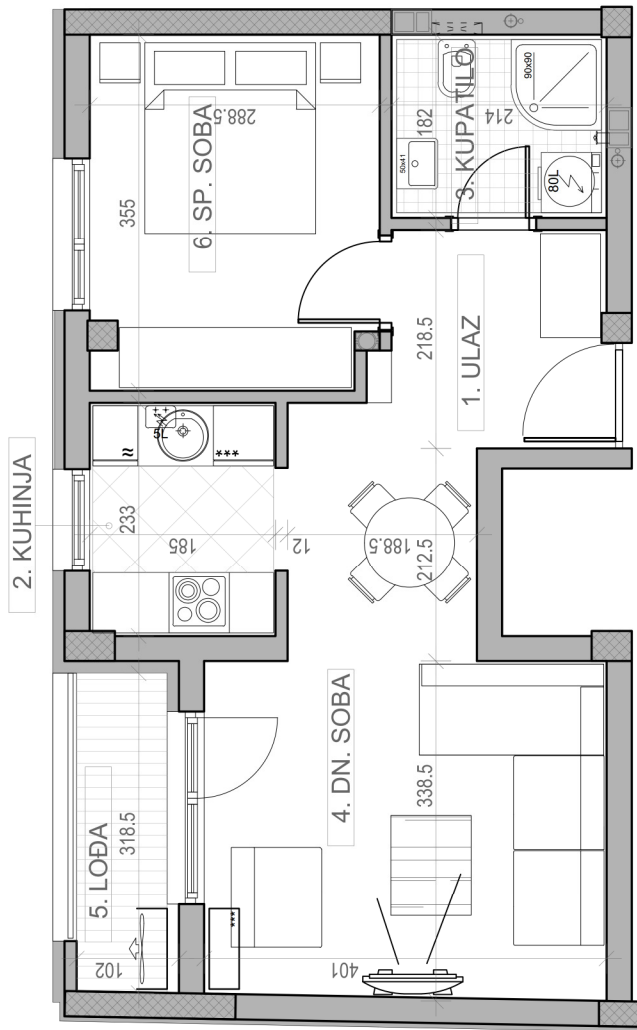
Novi Sad, ul. Jaše Ignjatovića 11-13

kp 8582

osnova stana br. 03

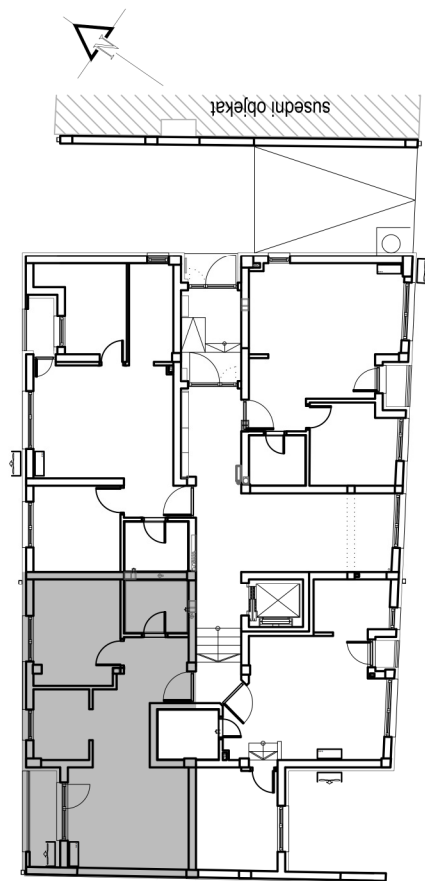
PRIZEMLJE / **P=43.75 m<sup>2</sup>**

PRIZEMLJE		
STAN BR. 03		
br.	prostorija	povišina/m <sup>2</sup>
1	ULAZ	4.19
2	KUHINJA	4.66
3	KUPATILO	3.90
4	DN. SOBA	18.41
5	LOBA	2.86
6	SP. SOBA	9.73
<b>UKUPNO</b>		<b>43.75 m<sup>2</sup></b>
		<b>-3%</b>
		<b>42.44 m<sup>2</sup></b>



$P = 43.75 \text{ m}^2$   
 $P_{-3\%} = 42.44 \text{ m}^2$

dvoriste



ul. Jaše Ignjatovića