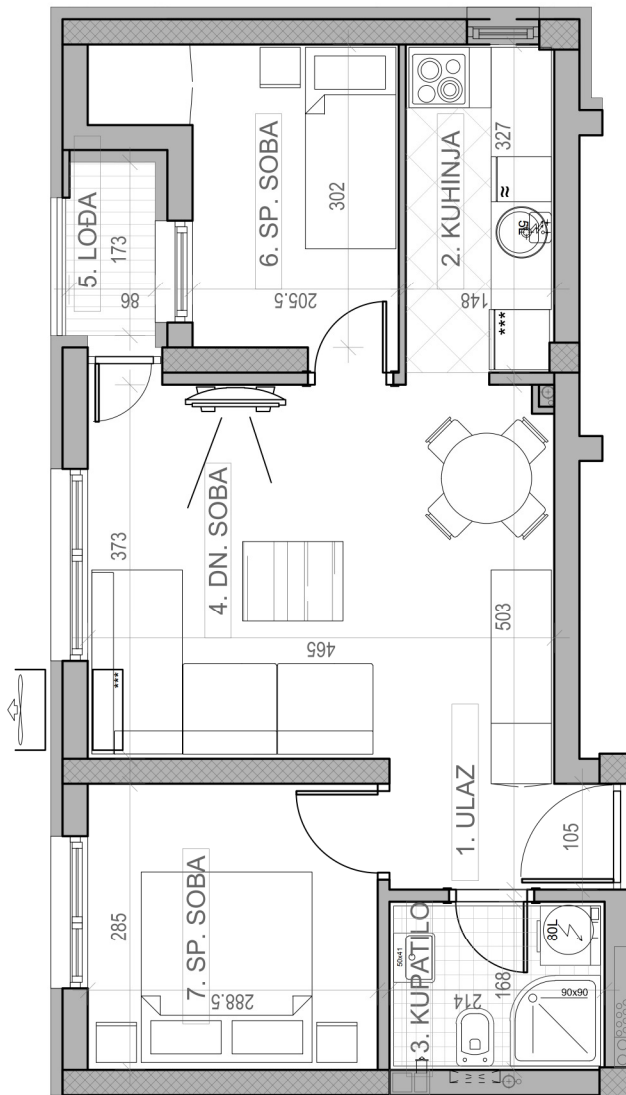


STAMBENA ZGRADA Su+P+3+Pk

Novi Sad, ul. Jaše Ignjatovića 11-13

kp 8582

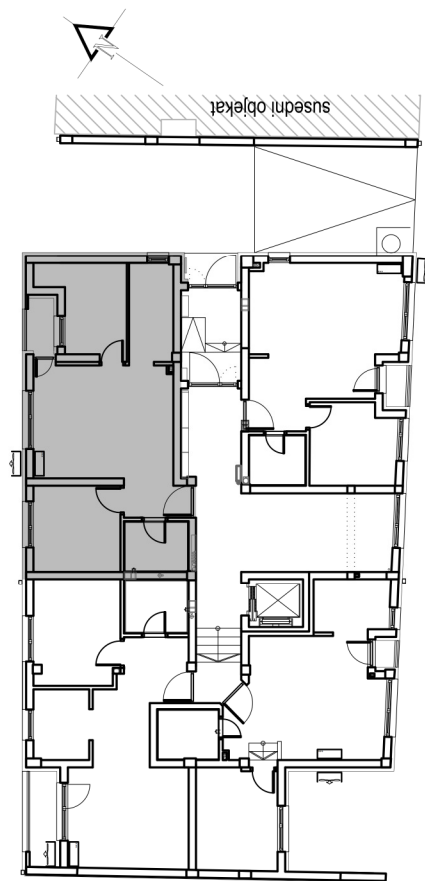
osnova stana br. 04
PRIZEMLJE / **P=45.69 m²**



P = 45.69 m²
P_{-3%} = 44.32 m²

PRIZEMLJE		
STAN BR. 04		
br.	prostorija	povišina/m ²
1	ULAZ	2.56
2	KUHINJA	4.84
3	KUPATILO	3.68
4	DN. SOBA	17.34
5	LOBA	1.67
6	SP. SOBA	7.20
7	SP. SOBA	8.40
UKUPNO		45.69 m²
		-3%
		44.32 m²

dvoriste



ul. Jaše Ignjatovića