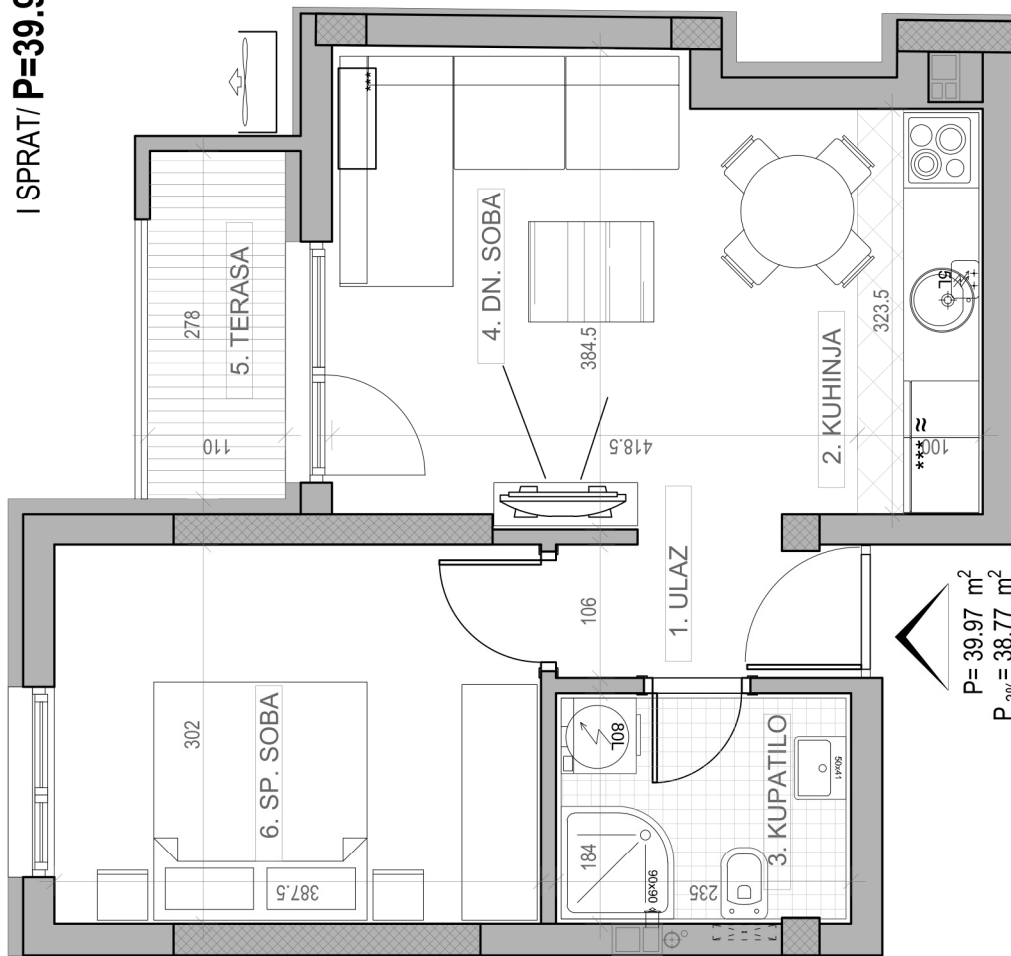


# STAMBENA ZGRADA Su+P+3+Pk

Novi Sad, ul. Jaše Ignjatovića 11-13

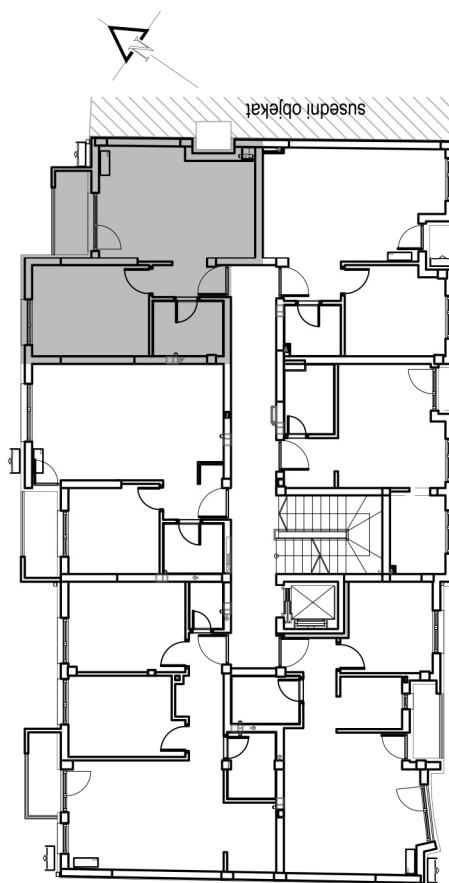
kp 8582

osnova stana br. 08  
I SPRAT/ **P=39.97 m<sup>2</sup>**



I SPRAT		
STAN BR. 08		
br.	prostorija	povišina/m <sup>2</sup>
1	ULAZ	2.49
2	KUHINJA	3.23
3	KUPATILO	4.33
4	DN. SOBA	15.21
5	TERASA	3.00
6	SP. SOBA	11.71
<b>UKUPNO</b>		<b>39.97 m<sup>2</sup></b>
		<b>-3%</b>
		<b>38.77 m<sup>2</sup></b>

dvoriste



ul. Jaše Ignjatovića