

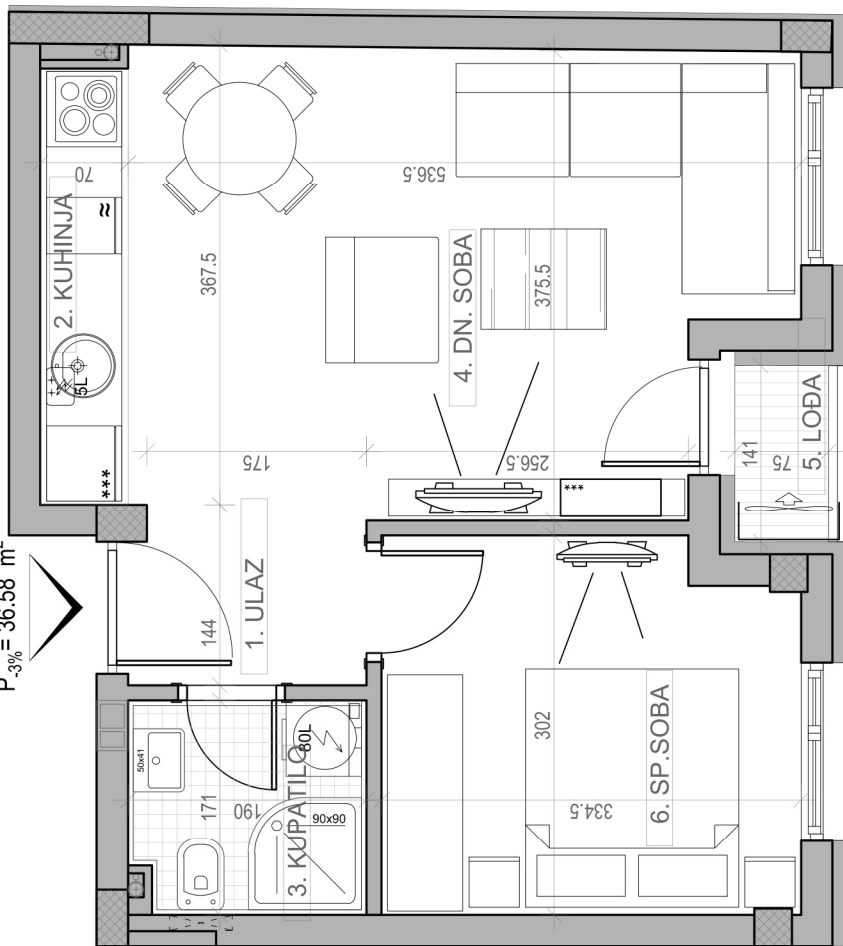
# STAMBENA ZGRADA Su+P+3+Pk

Novi Sad, ul. Jaše Ignjatovića 11-13

kp 8582

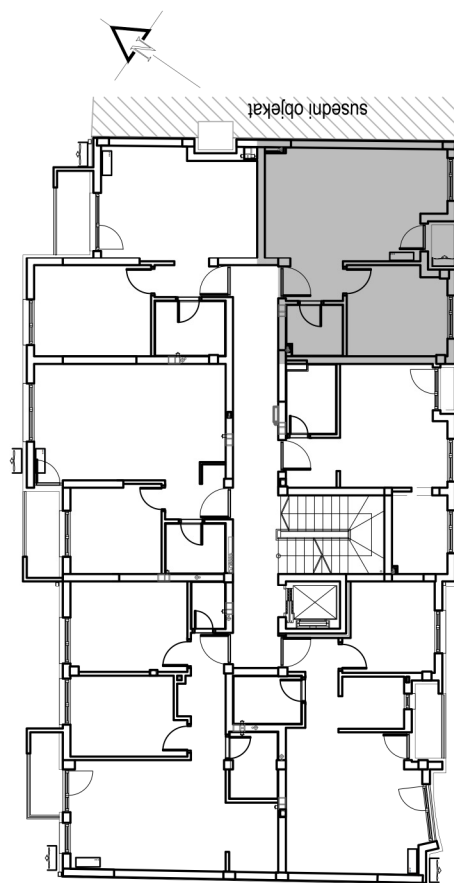
osnova stana br. 09  
I SPRAT/ **P=37.71 m<sup>2</sup>**

P = 37.71 m<sup>2</sup>  
P<sub>-3%</sub> = 36.58 m<sup>2</sup>



I SPRAT		
STAN BR. 09		
br.	prostorija	povišina/m <sup>2</sup>
1	ULAZ	2.22
2	KUHINJA	2.40
3	KUPATILO	3.50
4	DN. SOBA	18.81
5	LOBA	1.06
6	SP. SOBA	9.72
<b>UKUPNO</b>		<b>37.71 m<sup>2</sup></b>
		<b>-3%</b>
		<b>36.58 m<sup>2</sup></b>

dvoriste



ul. Jaše Ignjatovića