

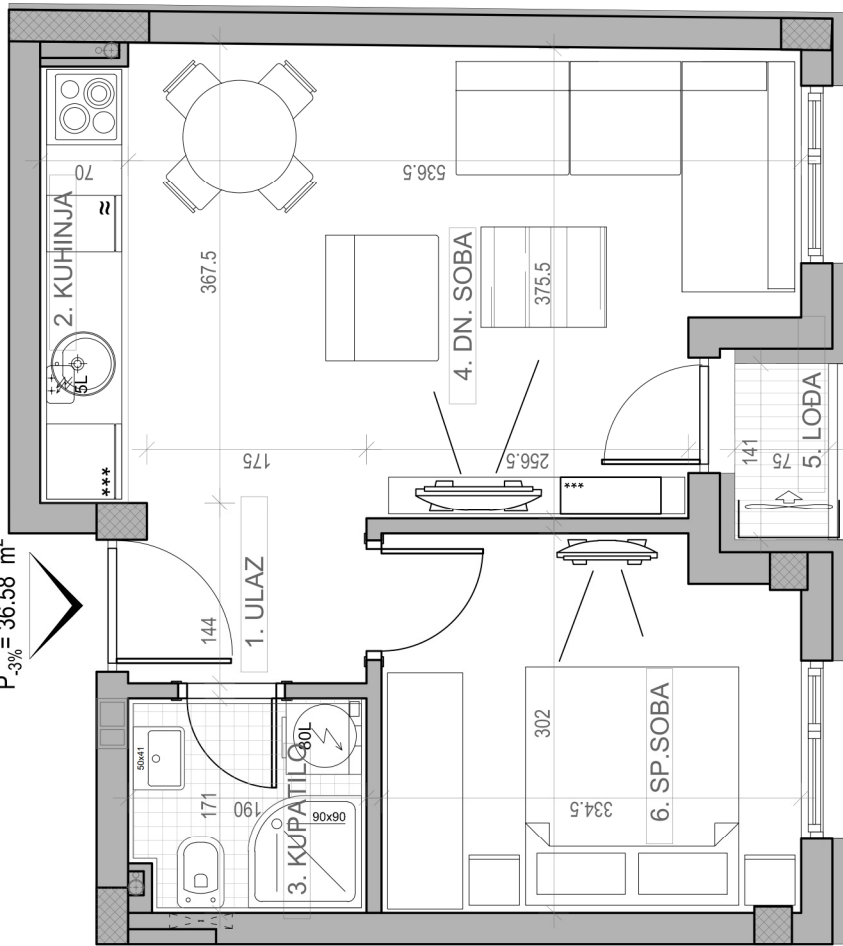
STAMBENA ZGRADA Su+P+3+Pk

Novi Sad, ul. Jaše Ignjatovića 11-13

kp 8582

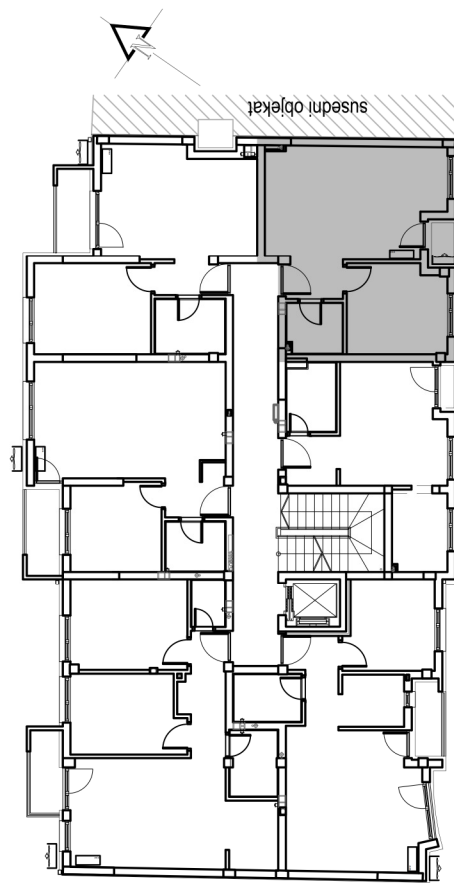
osnova stana br. 15
II SPRAT/ **P=37.71 m²**

P = 37.71 m²
P_{-3%} = 36.58 m²



II SPRAT		
STAN BR. 15		
br.	prostorija	povišina/m ²
1	ULAZ	2.22
2	KUHINJA	2.40
3	KUPATILO	3.50
4	DN. SOBA	18.81
5	LOBA	1.06
6	SP. SOBA	9.72
UKUPNO		37.71 m²
		-3%
		36.58 m²

dvoriste



ul. Jaše Ignjatovića