

STAMBENA ZGRADA Su+P+3+Pk

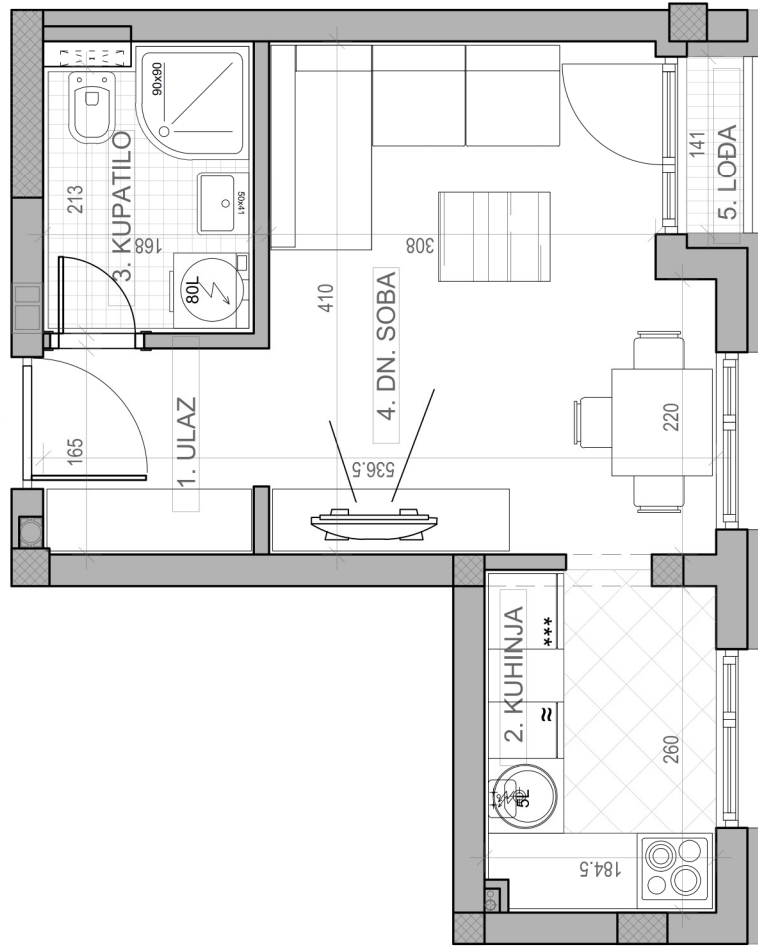
Novi Sad, ul. Jaše Ignjatovića 11-13

kp 8582

osnova stana br. 16

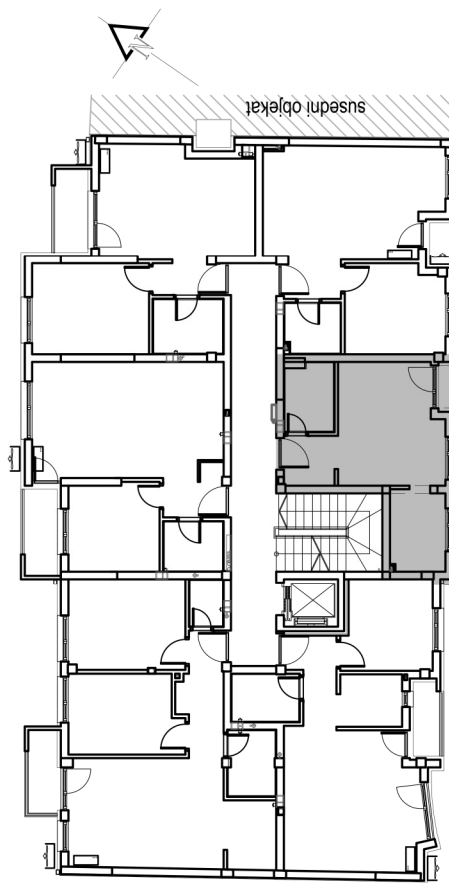
II SPRAT/ **P=26.14 m²**

P = 26.14 m²
P_{-3%} = 25.36 m²



II SPRAT		
STAN BR. 16		
br.	prostorija	povišina/m ²
1	ULAZ	2.95
2	KUHINJA	4.97
3	KUPATILO	3.91
4	DN. SOBA	13.67
5	LOĐA	0.64
UKUPNO		26.14 m²
		-3%
		25.36 m²

dvoriste



ul. Jaše Ignjatovića