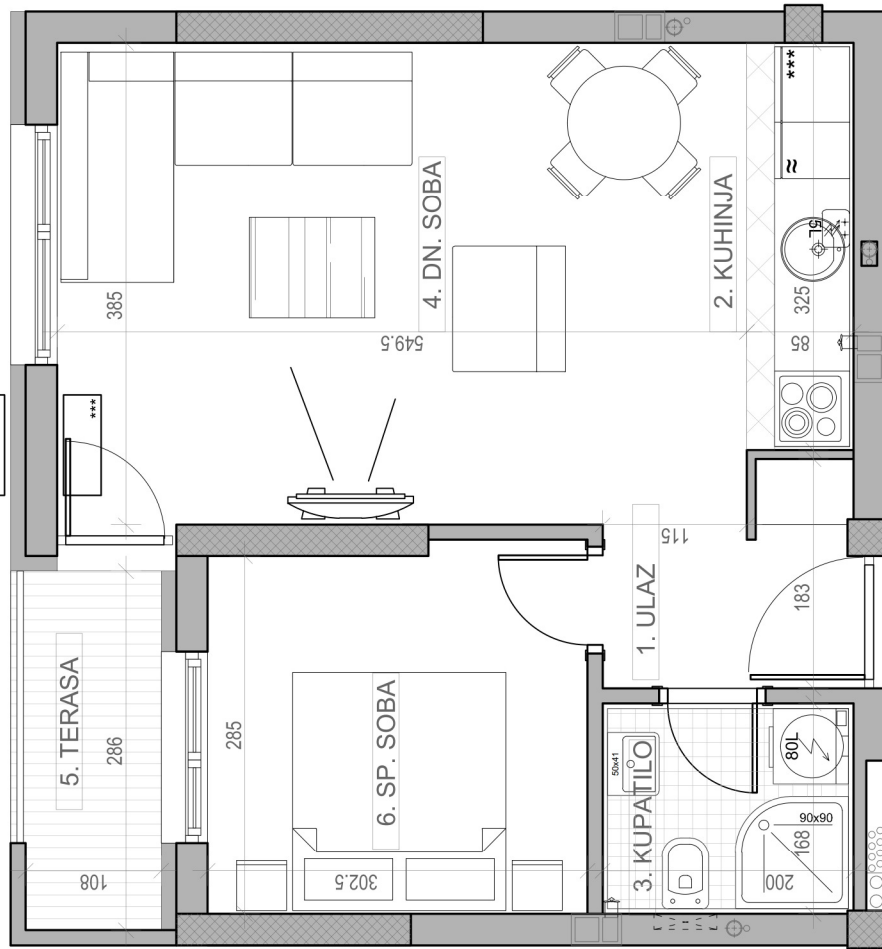


STAMBENA ZGRADA Su+P+3+Pk

Novi Sad, ul. Jaše Ignjatovića 11-13

kp 8582

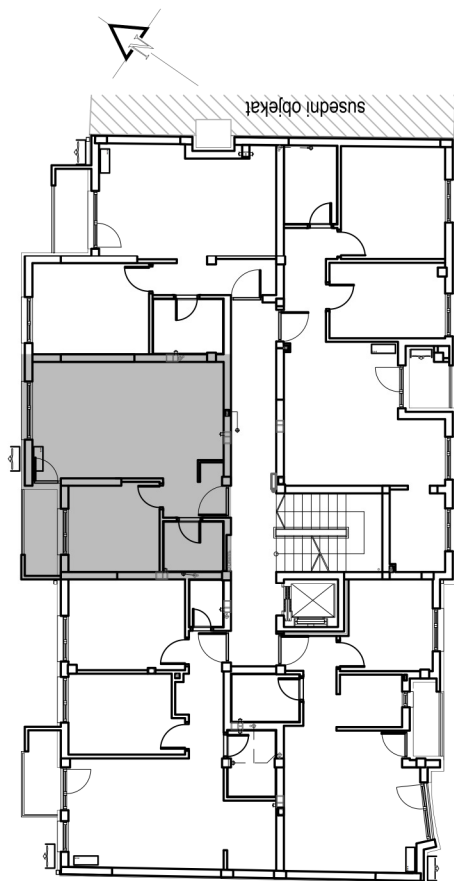
osnova stana br. 19
III SPRAT/ **P=42.07 m²**



P = 42.07 m²
P_{-3%} = 40.81 m²

III SPRAT		
STAN BR. 19		
br.	prostorija	povišina/m ²
1	ULAZ	2.63
2	KUHINJA	2.73
3	KUPATILO	3.60
4	DN. SOBA	21.16
5	TERASA	3.13
6	SP. SOBA	8.82
UKUPNO		42.07 m²
		-3%
		40.81 m²

dvoriste



ul. Jaše Ignjatovića