

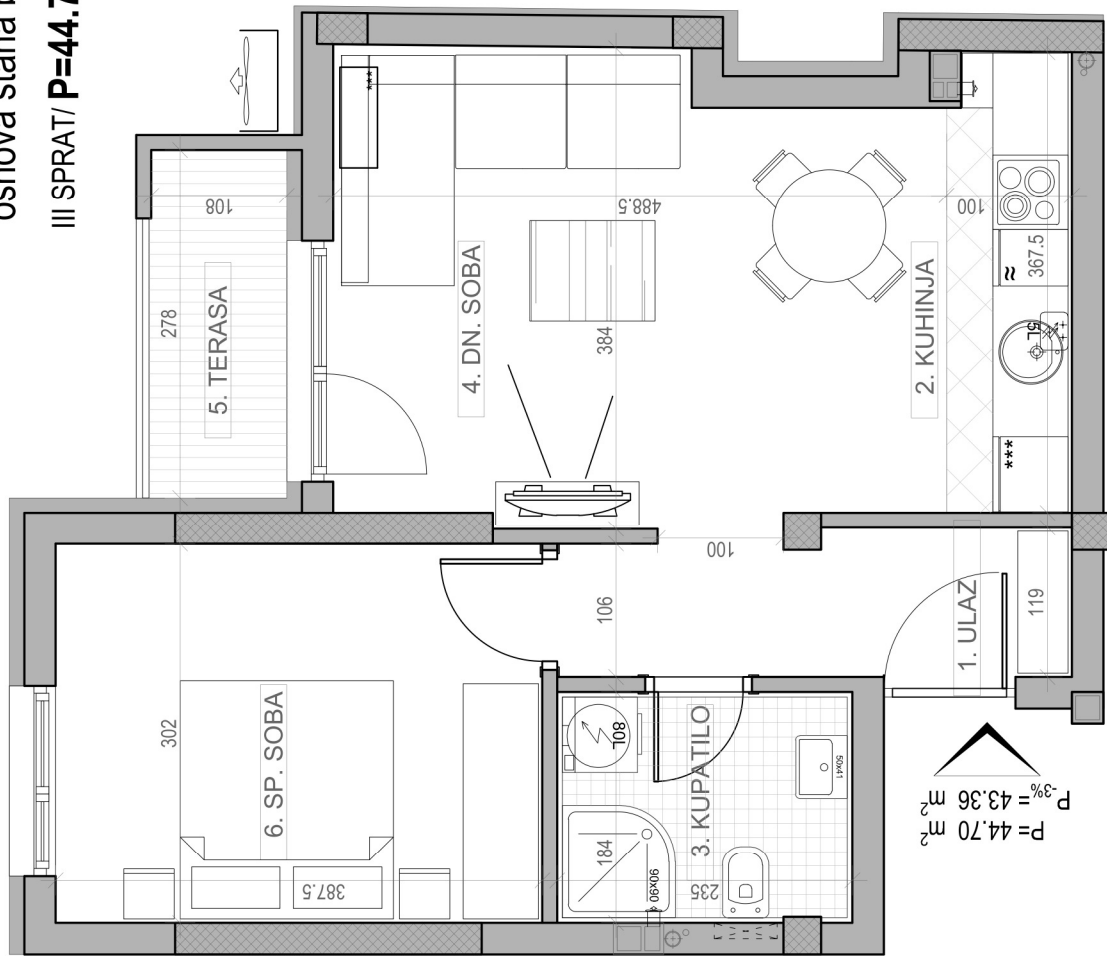
STAMBENA ZGRADA Su+P+3+Pk

Novi Sad, ul. Jaše Ignjatovića 11-13

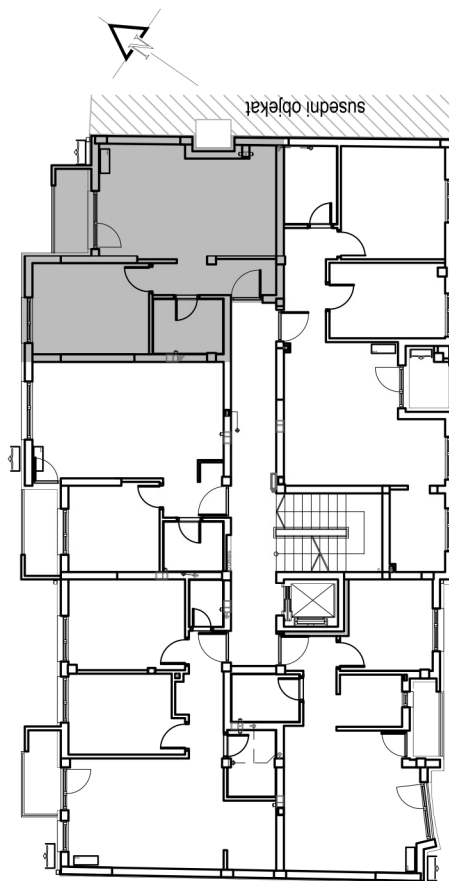
kp 8582

III SPRAT	
STAN BR. 20	
br.	prostorija površina/m ²
1	ULAZ 4.61
2	KUHINJA 3.97
3	KUPATILO 4.33
4	DN. SOBA 17.08
5	TERASA 3.00
6	SP. SOBA 11.71
UKUPNO 44.70 m²	
-3% 43.36 m²	

osnova stana br. 20
III SPRAT/ **P=44.70 m²**



dvoriste



ul. Jaše Ignjatovića