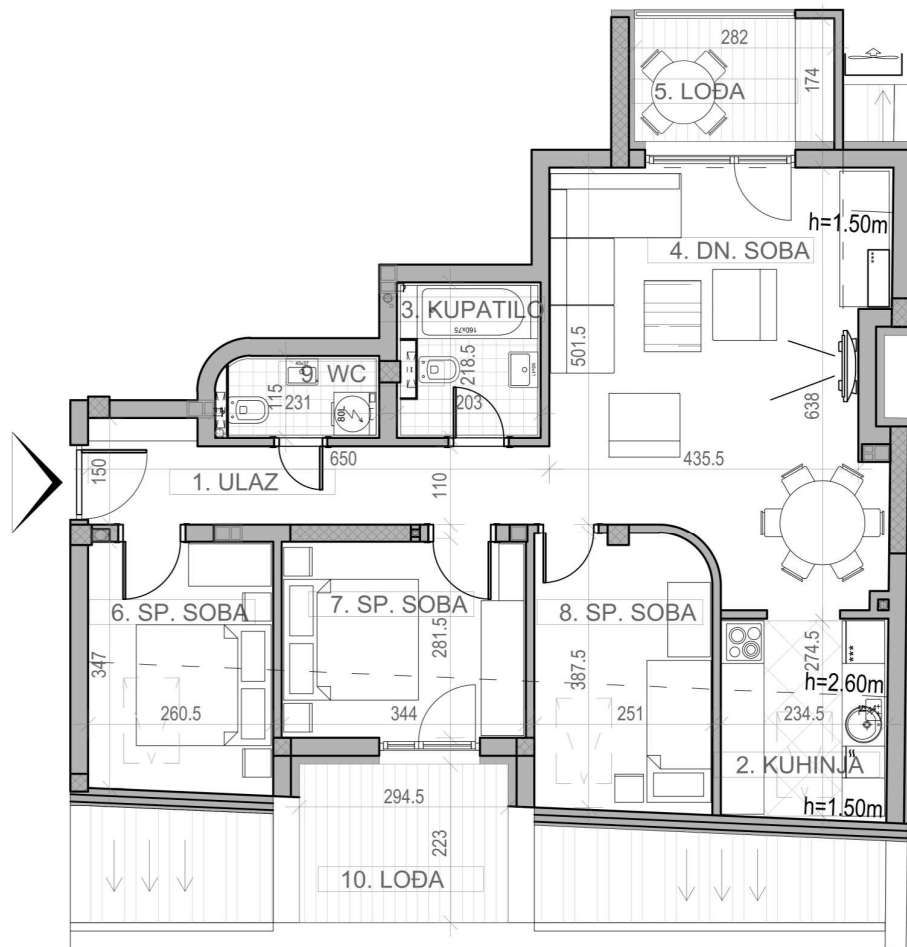


osnova stana br. 24
POTKROVLJE/ **P=86,59 m²**

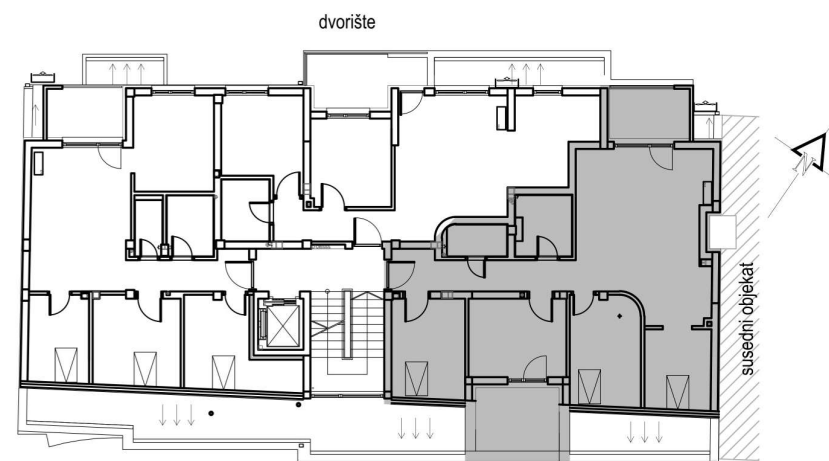
STAMBENA ZGRADA Su+P+3+Pk

Novi Sad, ul. Jaše Ignjatovića 11-13

kp 8582



P O T K R O V L J E S T A N B R. 2 4		
br.	prostorija	površina/m ²
1	ULAZ	7,62
2	KUHINJA	6,23
3	KUPATILO	4,05
4	DN. SOBA	25,51
5	LOĐA	5,17
6	SP. SOBA	10,08
7	SP. SOBA	9,42
8	SP. SOBA	9,46
9	WC	2,22
10	LOĐA	6,83
UKUPNO		86,59 m²



ul. Jaše Ignjatovića