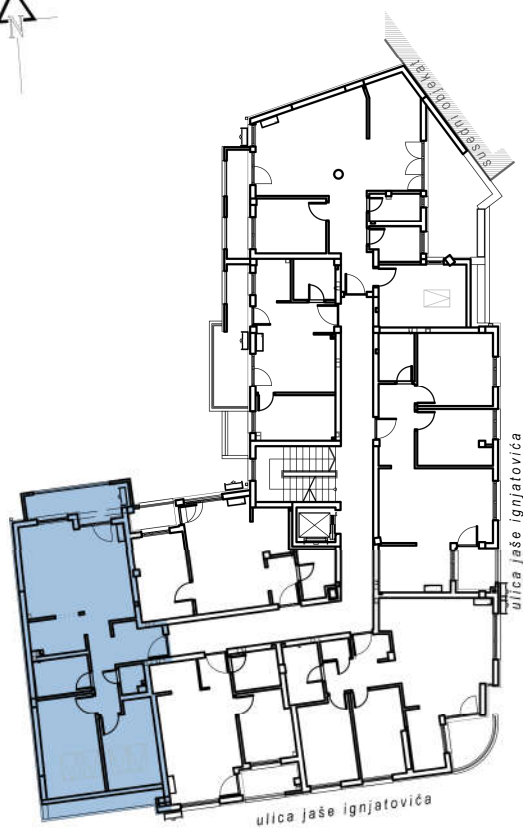


# STAMBENA ZGRADA Su+P+3+Pk

Novi Sad, ul. Jaše Ignjatovića 7-9

kp 8579

POTKROVLJE	
br.	prostorija
1	ULAZ
2	KUHINJA
3	KUPATILO
4	DN. SOBA
5	LOBA
6	WC
7	SP. SOBA
8	SP. SOBA
<b>UKUPNO</b>	
	64.25 m <sup>2</sup>
	-3%
	62.32 m <sup>2</sup>



## osnova stana br. 31

potkrovlje / P=64.25 m<sup>2</sup>

