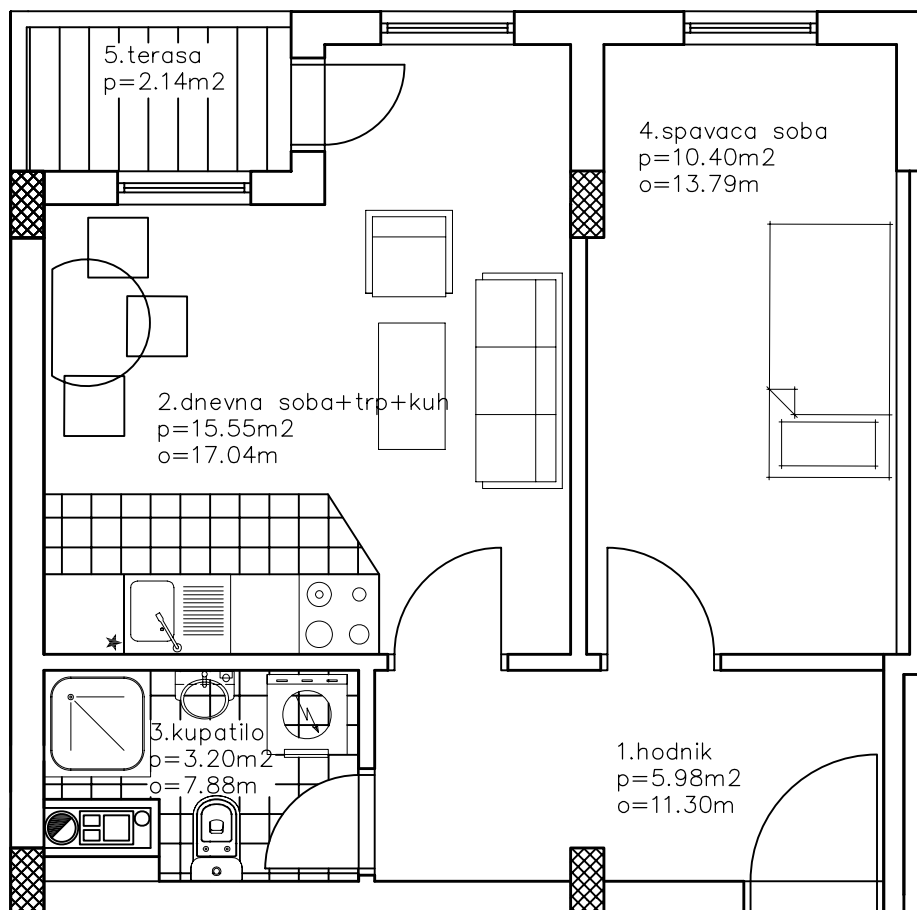
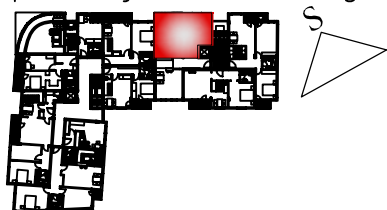


položaj stana u zgradi



NAZIV PROSTORIJE	POVRSINA (m ²)	OBIM (m)	PODNA OBLOGA	OBRADA ZIDOVA
1 hodnik	5.98	11.30	parket	poludisperzija
2 dnevna soba+trp.	15.55	17.04	parket	poludisperzija
3 kupatilo	3.20	7.88	keram.plo.	keram.plo.
4 spavaca soba	10.40	13.79	parket	poludisperzija
5 terasa	2.79		keram.plo.	
ukupno	37.92 x 0.97=36.79m ²			

SPRAT	lamela	stan br.	kupac
II SPRAT	lamela B	stan br. 6	
III SPRAT	lamela B	stan br. 9	
V SPRAT	lamela B	stan br. 16	