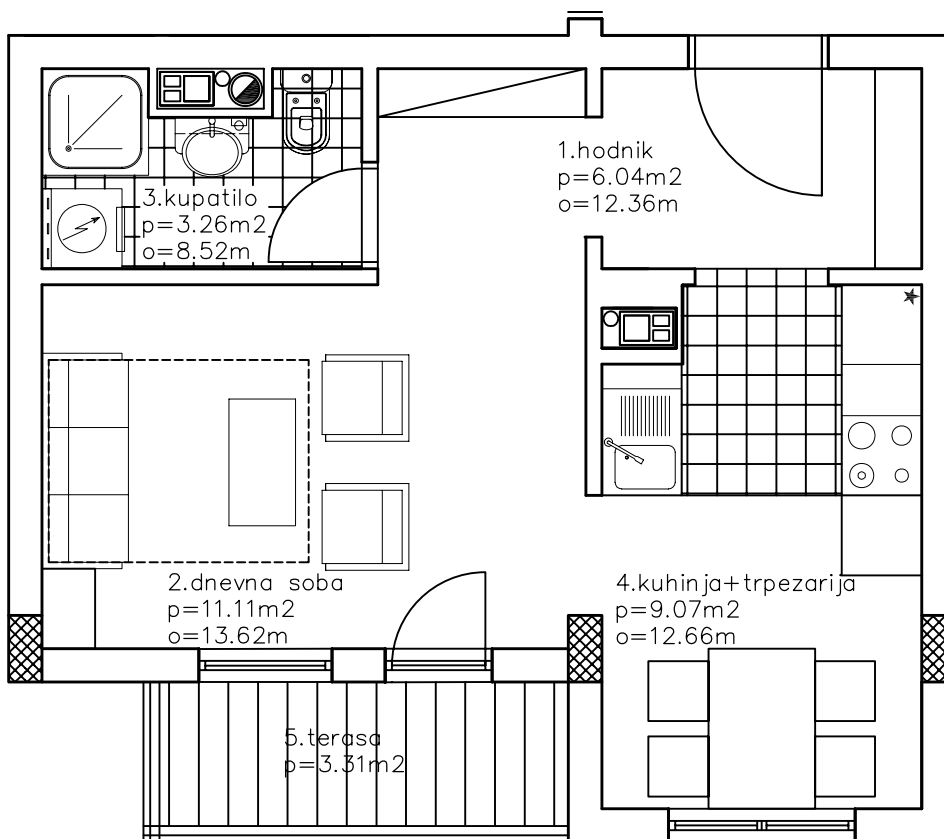
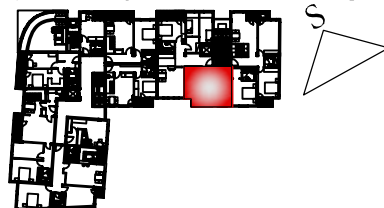


položaj stana u zgradi



	NAZIV PROSTORIJE	POVRSINA (m ²)	OBIM (m)	PODNA OBLOGA	OBRADA ZIDOVA
1	hodnik	6.04	12.36	parket	poludisperzija
2	dnevna soba	11.11	13.62	parket	poludisperzija
3	kupatilo	3.26	8.52	keram.plo.	keram.plo.
4	kuh.+trp.	9.07	12.66	parket/ker.	poludis./ker.
5	terasa	3.31	—	keram.plo.	
ukupno		32.79 x 0.97=31.80m ²			

SPRAT	lamela	stan br.	kupac
IV SPRAT	lamela B	stan br. 11	