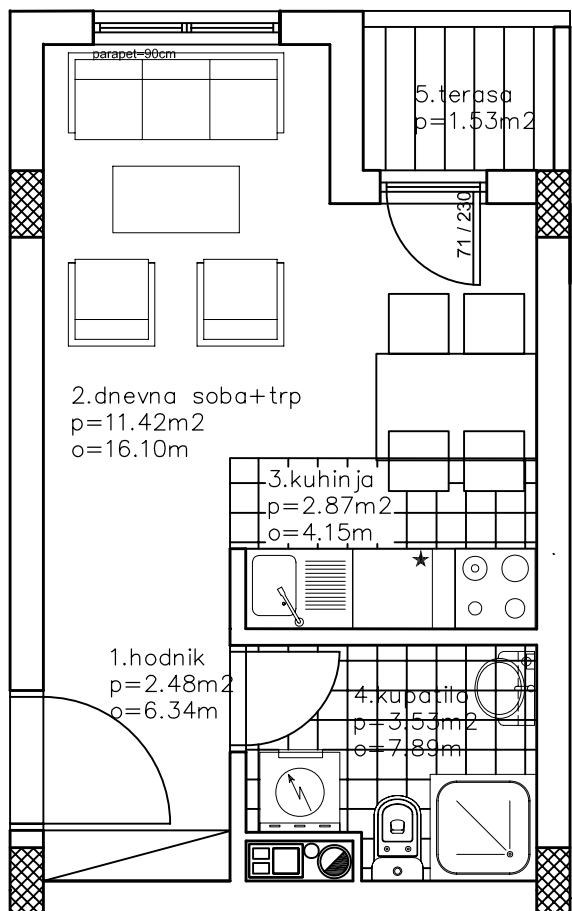
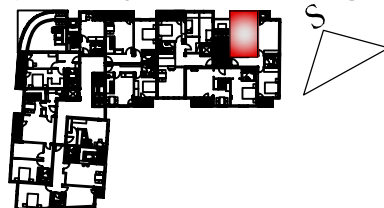


položaj stana u zgradi



NAZIV PROSTORIJE	POVRSINA (m ²)	OBIM (m)	PODNA OBLOGA	OBRADA ZIDOVA
1 hodnik	2.48	6.34	parket	poludisperzija
2 dnevna soba	11.42	6.34	parket	poludisperzija
3 kuhinja	2.87	4.15	keram.plo.	keram.plo.
4 kupatilo	3.53	7.89	keram.plo.	keram.plo.
5 terasa	1.53	—	keram.plo.	
ukupno	21.83 x 0.97=21.17m ²			

SPRAT	lamela	stan br.	kupac
II SPRAT	lamela B	stan gars.	
V SPRAT	lamela B	stan br. 13	
VI SPRAT	lamela B	stan br. 17	