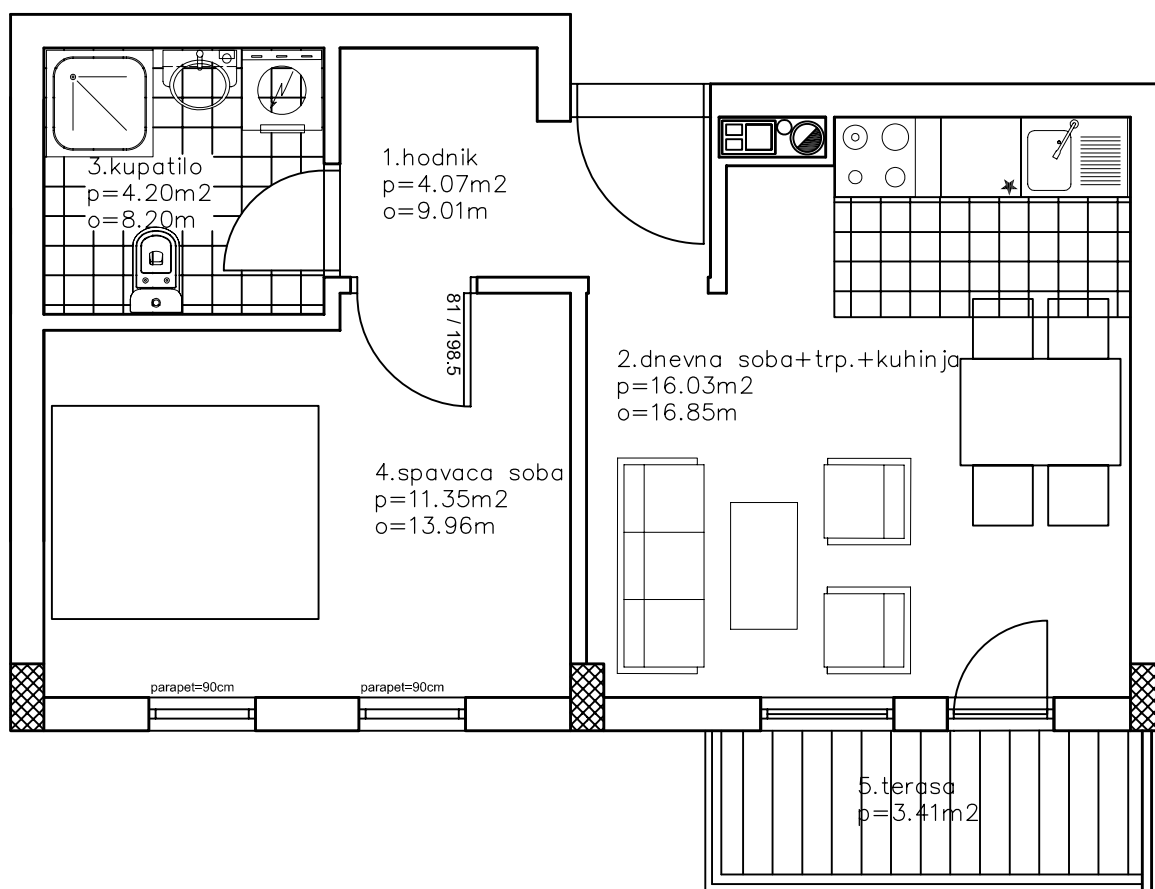
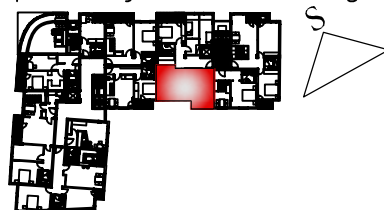


položaj stana u zgradi



	NAZIV PROSTORIJE	POVRSINA (m ²)	OBIM (m)	PODNA OBLOGA	OBRADA ZIDOVA
1	hodnik	4.07	9.0	parket	poludisperzija
2	dnevna soba+k+t	16.03	16.85	parket	poludisperzija
3	kupatilo	4.20	8.20	keram.plo.	keram.plo.
4	spavaca soba	11.35	13.96	parket	poludisperzija
5	terasa	3.41	—	keram.plo.	
ukupno		39.06 x 0.97=37.88m ²			

SPRAT	lamela	stan br.	kupac
VI SPRAT	lamela B	stan br. 19	