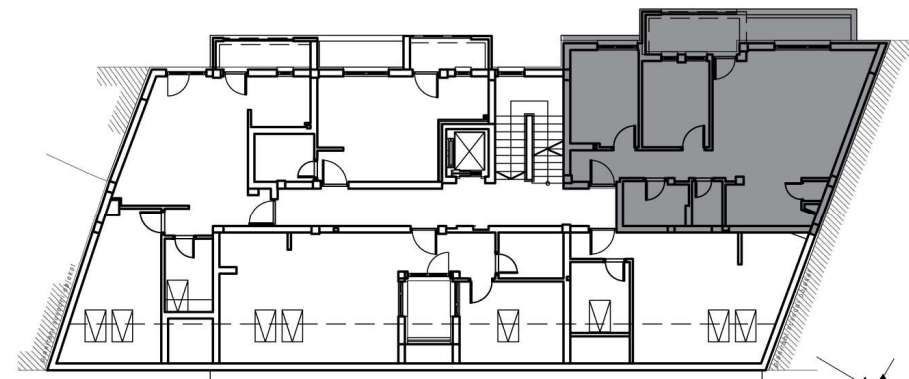
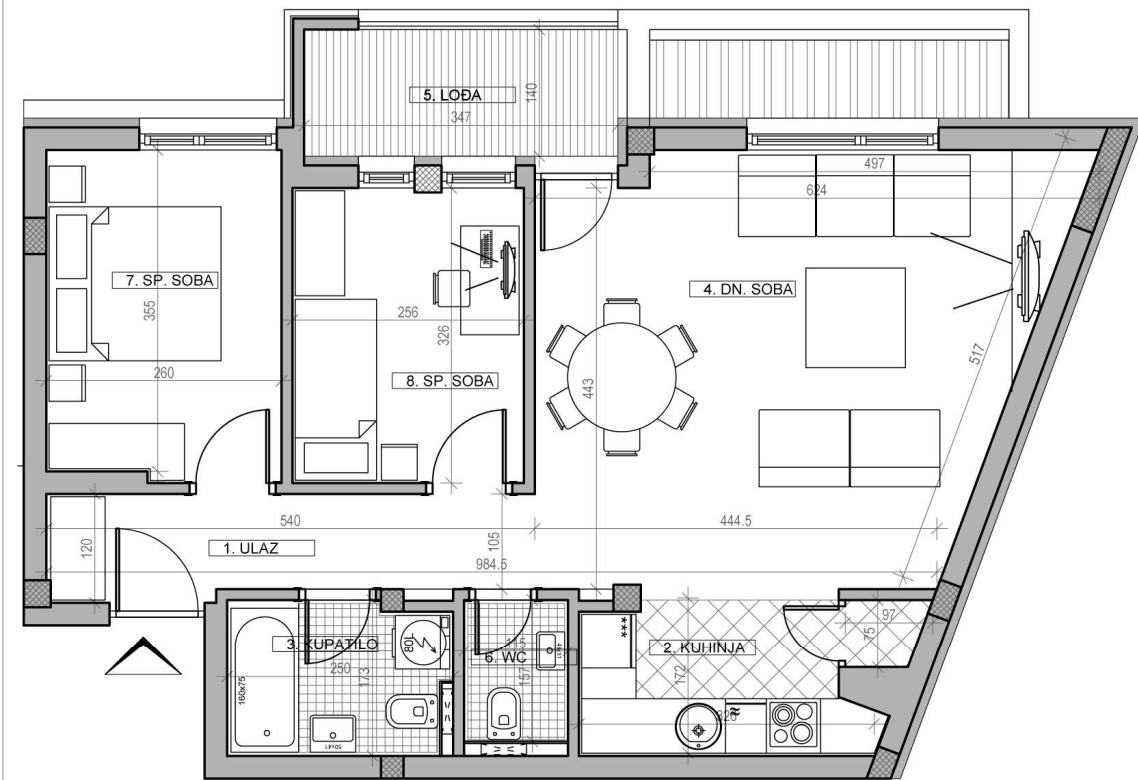


osnova stana br. 21
 POTKROVLJE/ **P=64,67m²**

STAMBENA ZGRADA Su+P+3+Pk

Novi Sad, ul. Đorđa Rajkovića 21-23
 kp 8610-1

| POTKROVLJE STAN BR. 21 | | |
|---------------------------|------------|---------------------------|
| br. | prostorija | površina/m ² |
| 1 | ULAZ | 5,54 |
| 2 | KUHINJA | 6,06 |
| 3 | KUPATILO | 3,79 |
| 4 | DN. SOBA | 25,07 |
| 5 | LOĐA | 5,69 |
| 6 | WC | 1,57 |
| 7 | SP. SOBA | 8,93 |
| 8 | SP. SOBA | 8,02 |
| UKUPNO | | 64,67m² |



ulica Đorđa Rajkovića