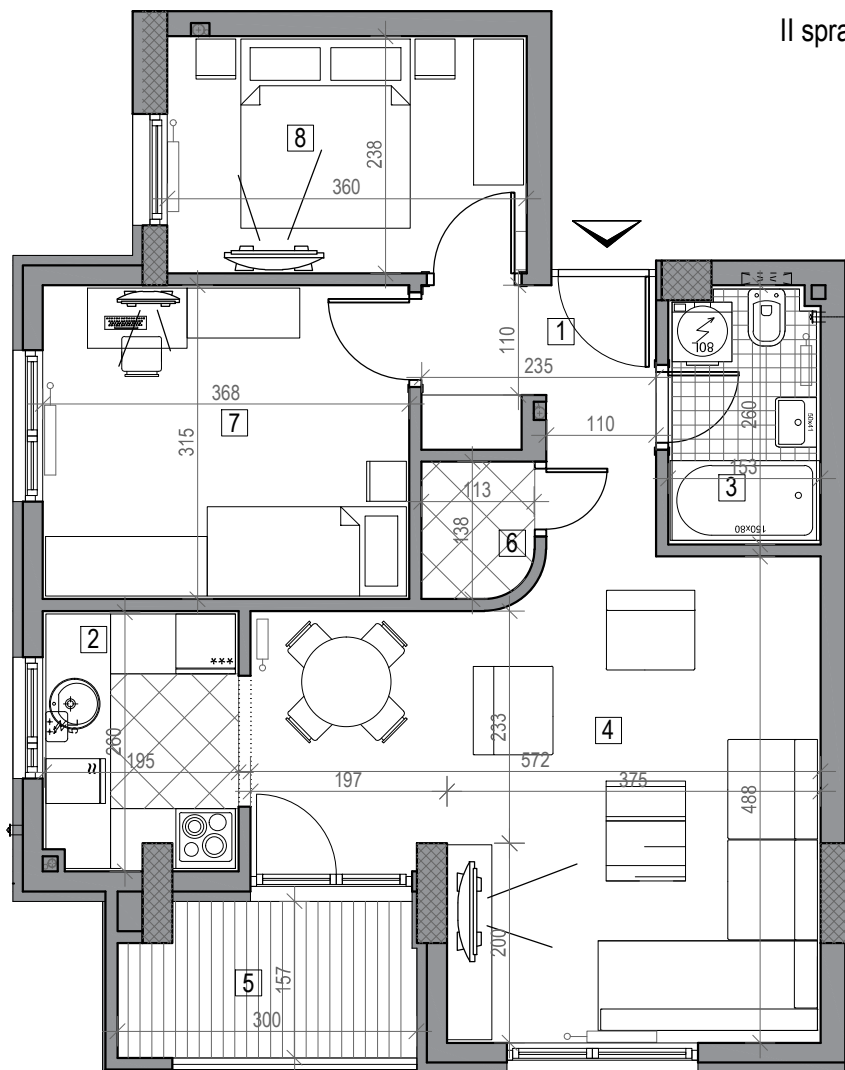


osnova stana br. 20

II sprat / P=62.56 m²



STAMBENA ZGRADA

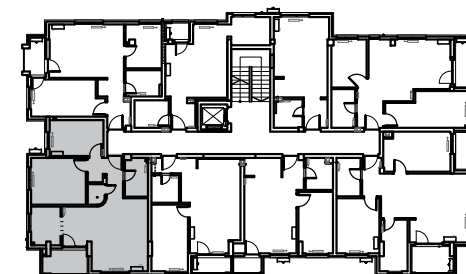
Po+P+5+Pk

Novi Sad, Ul. Futoška 27-29
 kp 3487/6

II SPRAT		
STAN BR. 20		
br.	prostorija	površina/m ²
1	ULAZ	4.50
2	KUHINJA	4.98
3	KUPATILO	3.88
4	DN. SOBA	23.30
5	LOĐA	4.25
6	OSTAVA	1.51
7	SP. SOBA	11.59
8	SP. SOBA	8.55
UKUPNO		62.56 m²



ulica nova



dvorište