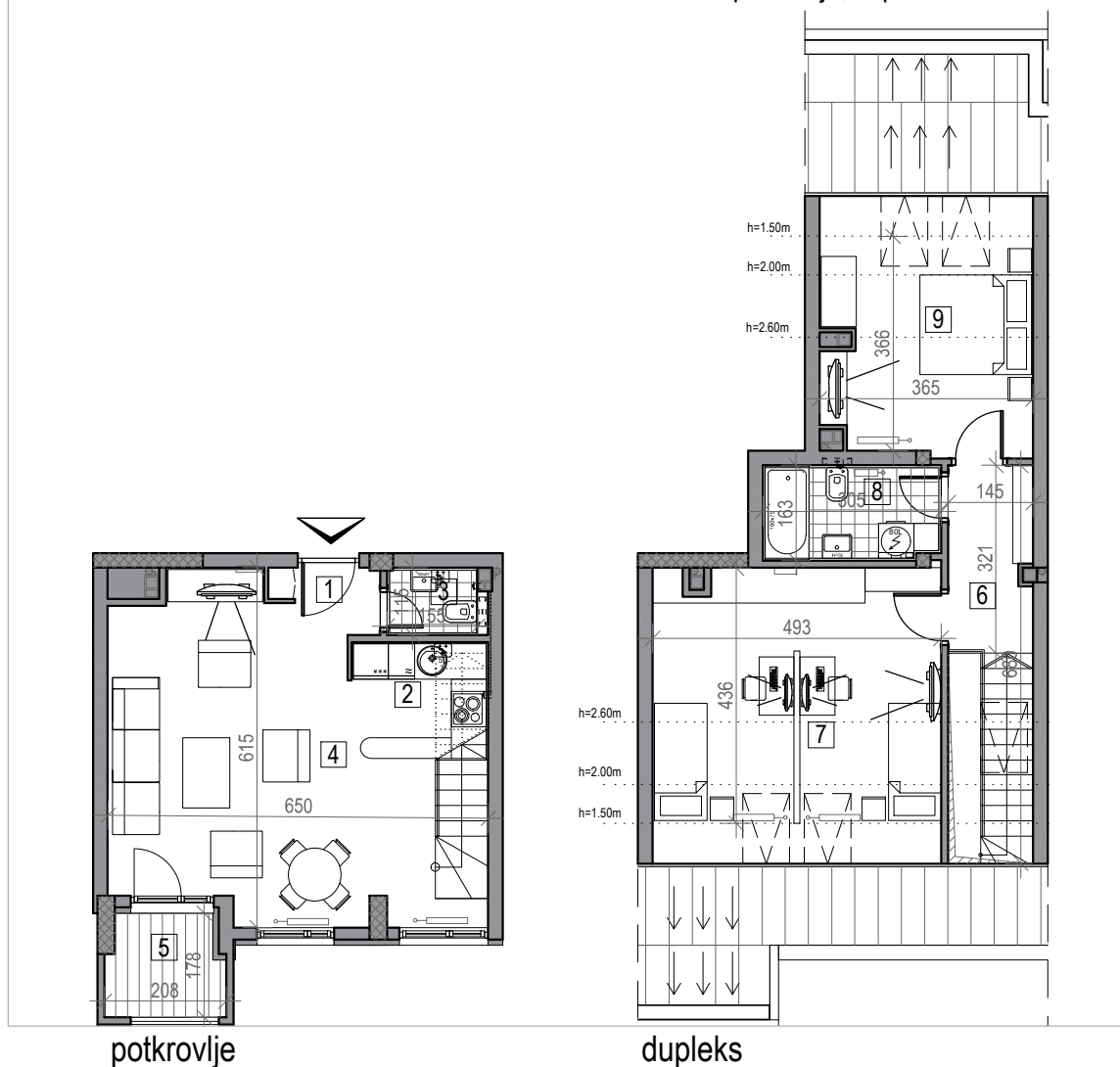
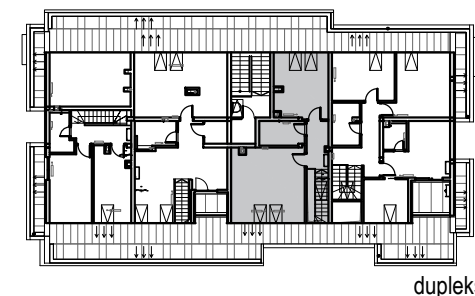


osnova stana br. 43
 potkrovlje, duplex / **P=86.52 m²**



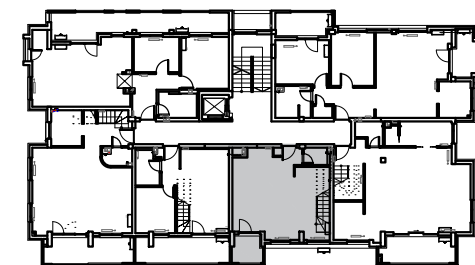
STAMBENA ZGRADA
Po+P+5+Pk
 Novi Sad, Ul. Futoška 27-29
 kp 3487/6

POTKROVLJE DUPEKS STAN BR. 43		
potkrovlje		
br.	prostorija	površina/m ²
1	ULAZ	1.85
2	KUHINJA	4.62
3	WC	1.98
4	DN. SOBA	27.80
5	LOĐA	3.11
UKUPNO POTKROVLJE		39.36 m²
dupleks		
br.	prostorija	površina/m ²
6	HODNIK	8.44
7	SP. SOBA	20.88
8	KUPATILO	4.92
9	SP. SOBA	12.92
UKUPNO DUPEKS		47.16 m²
UKUPNO STAN 43		86.52 m²



dupleks

ulica nova



potkrovlje

dvorište

