

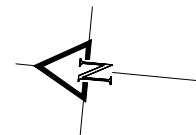
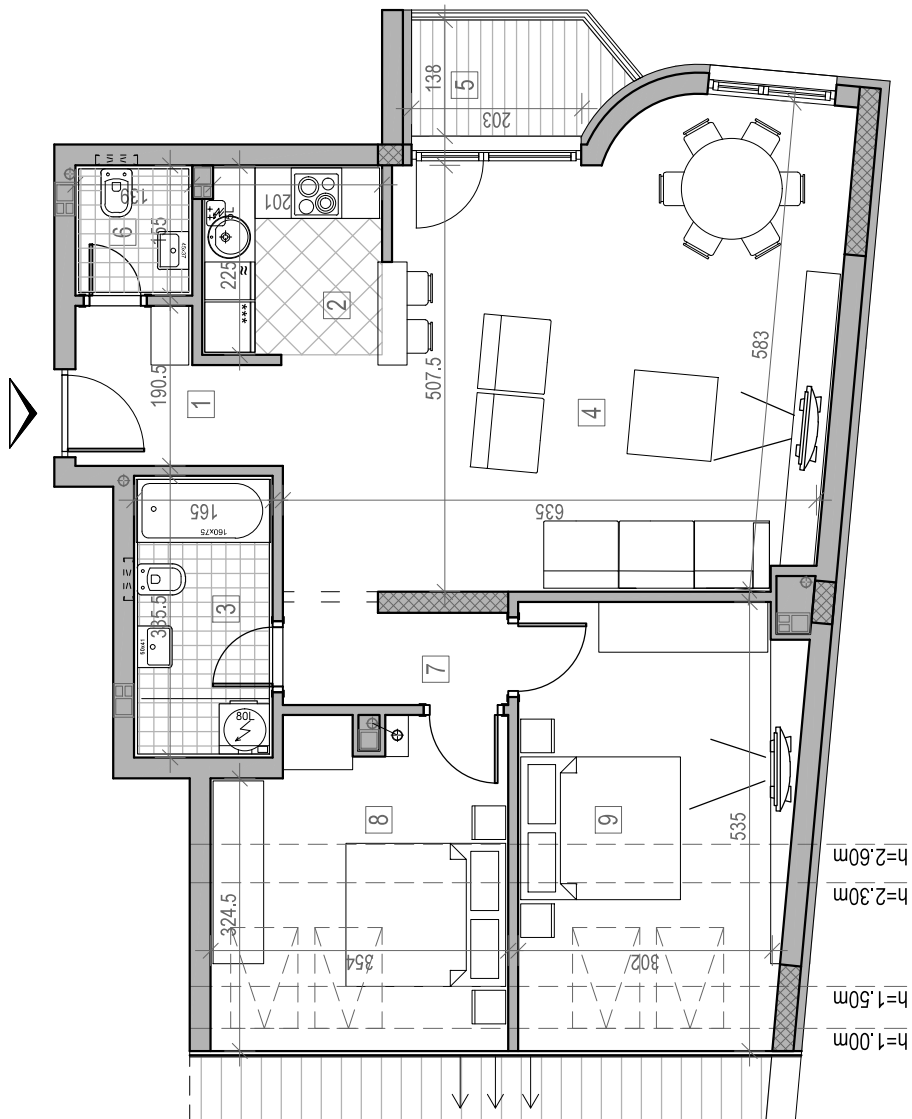
STAMBENA ZGRADA Su+P+4+Pk

Novi Sad, Ul. Jaše Ignjatovića 2
kp 9234

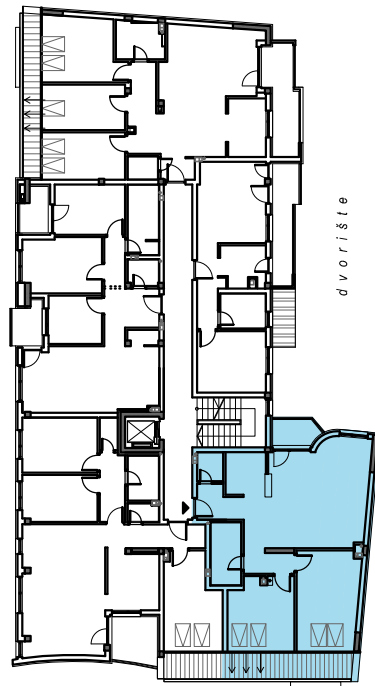
POTKROVLJE		
S T A N B R . 3 2		
br.	prostorija	površina/m ²
1	ULAZ	2,65
2	KUHINJA	4,83
3	KUPATILO	5,54
4	DN. SOBA	33,74
5	TERASA	3,19
6	WC	2,15
7	DEGAŽIMAN	2,95
8	SP. SOBA	9,80
9	SP. SOBA	15,12
UKUPNO		79,97 m²



osnova stana br. 32 potkrovlje



u l i c a j a s e i g n j a t o v i ć a



d v o r i š t e

u l i c a d o r d a r a j k o v i ć a