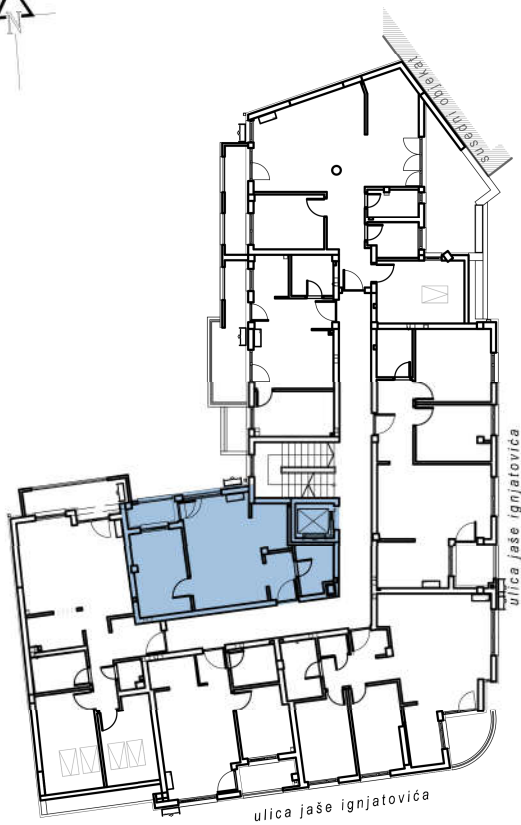


# STAMBENA ZGRADA Su+P+3+Pk

Novi Sad, ul. Jaše Ignjatovića 7-9

kp 8579

POTKROVLJE		
br.	površina/m <sup>2</sup>	
1	ULAZ	2.90
2	KUHINJA	3.28
3	KUPATILO	3.60
4	DN. SOBA	17.18
5	LOBA	2.08
6	SP. SOBA	9.60
<b>UKUPNO</b>		<b>38.64 m<sup>2</sup></b>
		<b>-3%</b>
		<b>37.48 m<sup>2</sup></b>



## osnova stana br. 32

potkrovlje / P=38.64 m<sup>2</sup>

