

# STAMBENI OBJEKAT

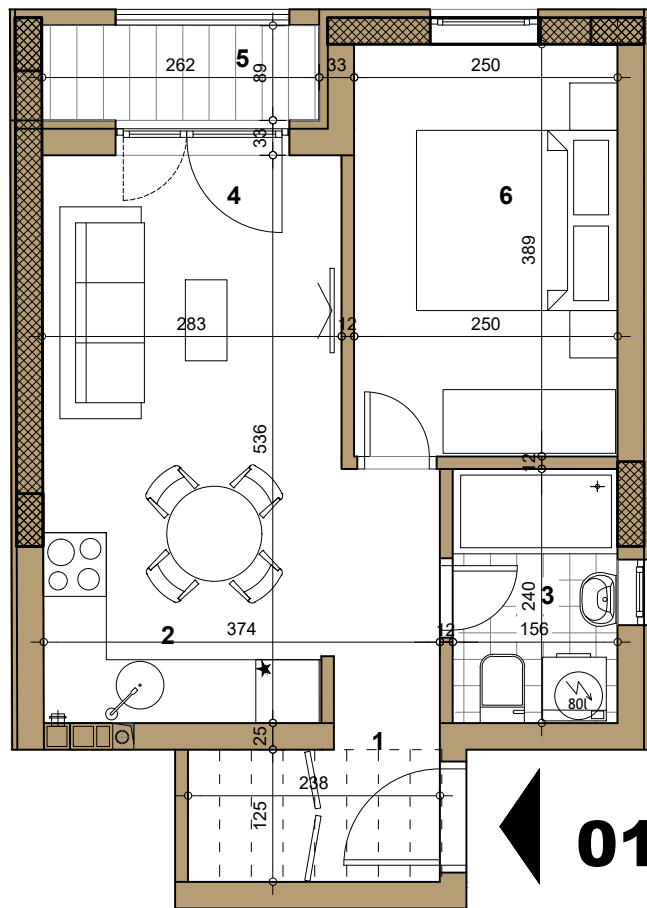
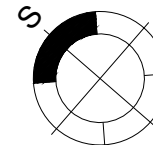
Novi Sad, Sime Matavulja

Prizemlje

STAN 01

DVOSOBAN

35.21m<sup>2</sup>



## 01 - DVOSOBAN

broj	naziv prostorije	obrada poda	površina (m <sup>2</sup> )
1	ulaz	parket	3.75
2	kuhinja	ker.pl.	2.62
3	kupatilo	ker.pl.	3.88
4	dnevna soba	parket	14.00
5	terasa	ker.pl.	2.36
6	spavaća soba	parket	9.69
<b>UKUPNO NETO</b>			<b>36.30m<sup>2</sup></b>
<b>UKUPNO NETO (-3%)</b>			<b>35.21m<sup>2</sup></b>

