

# STAMBENI OBJEKAT

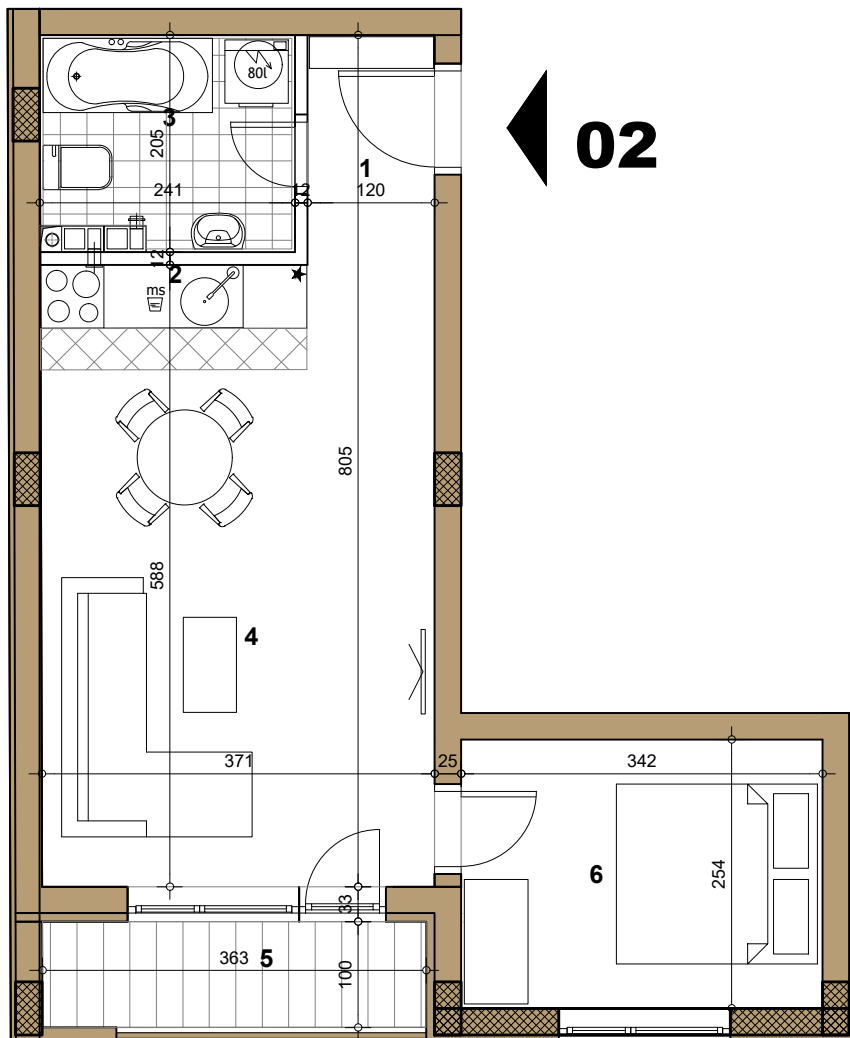
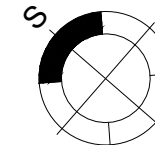
Novi Sad, Sime Matavulja

Prizemlje

STAN 02

DVOSOSBAN

40.16m<sup>2</sup>



## 02 - DVOSOBAN

broj	naziv prostorije	obrada poda	površina (m <sup>2</sup> )
1	ulaz	parket	2.61
2	kuhinja	ker.pl.	2.23
3	kupatilo	ker.pl.	4.63
4	dnevna soba	parket	19.63
5	terasa	ker.pl.	3.63
6	spavaća soba	parket	8.67
UKUPNO NETO			41.40m <sup>2</sup>
UKUPNO NETO (-3%)			40.16m <sup>2</sup>

