

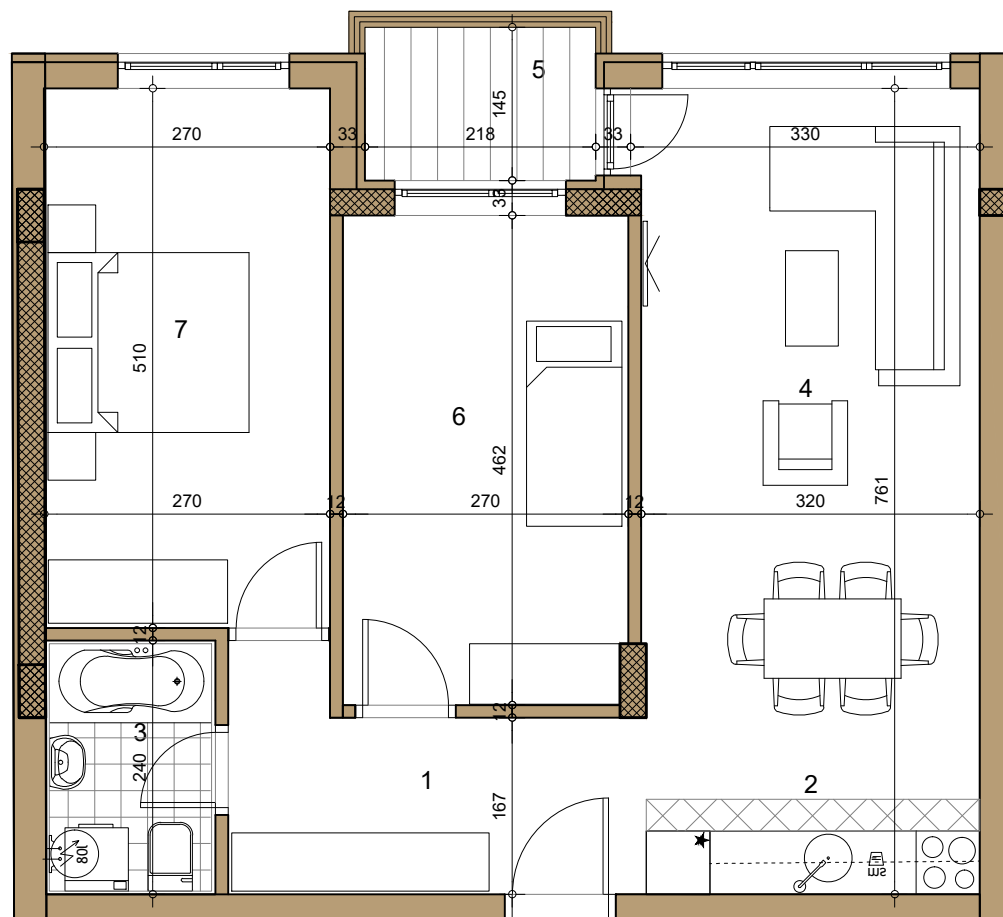
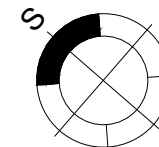
STAMBENI OBJEKAT

Novi Sad, Sime Matavulja

I / II / III / IV sprat ▶ STAN 03/08/13/19

TROSOBAN

62.89m²



03/08/13/19

03/08/13/19 -TROSOBAN

broj	naziv prostorije	obrada poda	površina (m ²)
1	ulaz	parket	7.34
2	kuhinja	ker.pl	5.26
3	kupatilo	ker.pl.	3.81
4	dnevna soba	parket	19.47
5	terasa	ker.pl.	3.16
6	spavaća soba	parket	12.02
7	spavaća soba	parket	13.78
UKUPNO NETO			64.84m ²
UKUPNO NETO (-3%)			62.89m ²

