

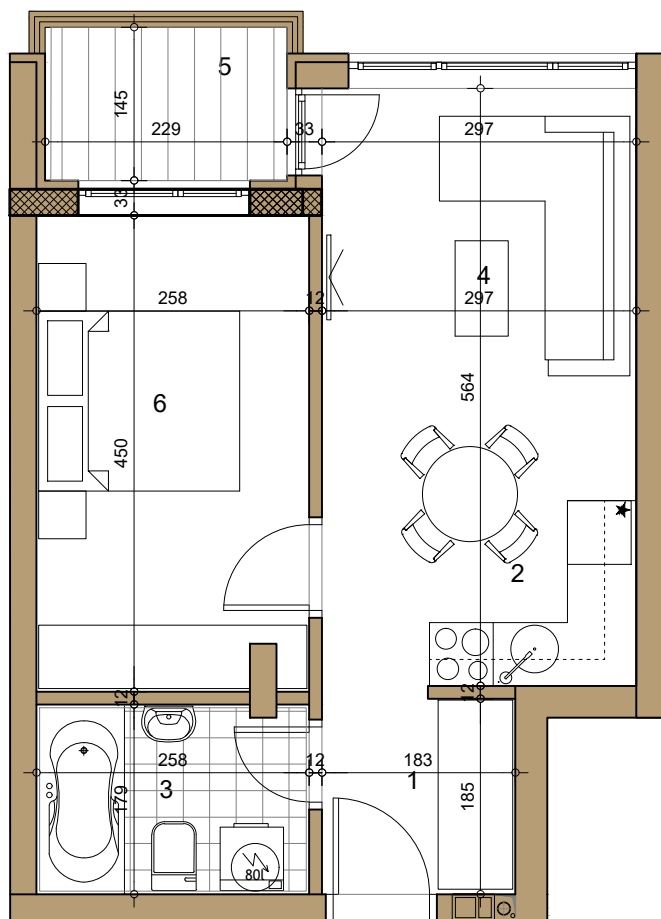
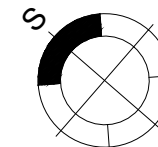
# STAMBENI OBJEKAT

Novi Sad, Sime Matavulja

I / II sprat ► STAN 04/09

DVOSOBAN

39.57m<sup>2</sup>



04/09

## 04/09 -DVOSOBAN

broj	naziv prostorije	obrada poda	površina (m <sup>2</sup> )
1	ulaz	parket	3.29
2	kuhinja	ker.pl	3.76
3	kupatilo	ker.pl.	4.63
4	dnevna soba	parket	14.19
5	terasa	ker.pl.	3.32
6	spavaća soba	parket	11.60

UKUPNO NETO 40.79m<sup>2</sup>

UKUPNO NETO (-3%) 39.57m<sup>2</sup>

