

STAMBENI OBJEKAT

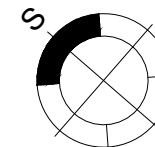
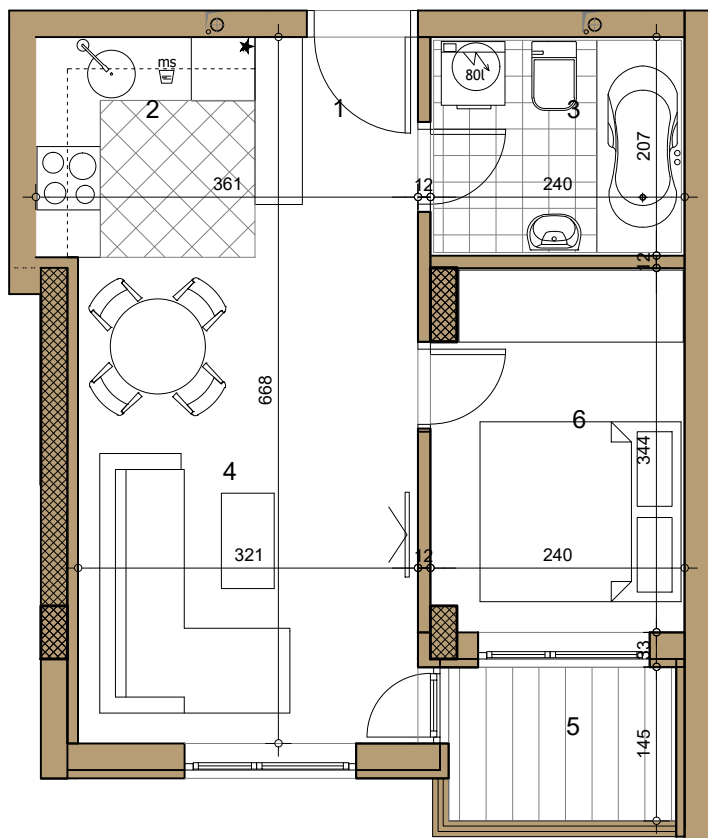
Novi Sad, Sime Matavulja

I / II sprat ▶ STAN 06/11

DVOSOBAN

36.75m²

06/11



06/11 -DVOSOBAN

broj	naziv prostorije	obrada poda	površina (m ²)
1	ulaz	parket	2.85
2	kuhinja	ker.pl	3.93
3	kupatilo	ker.pl.	4.75
4	dnevna soba	parket	15.19
5	terasa	ker.pl.	3.12
6	spavaća soba	parket	8.05
UKUPNO NETO			37.89m²
UKUPNO NETO (-3%)			36.75m²

