

# STAMBENI OBJEKAT

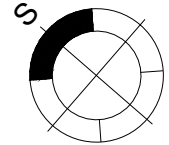
Novi Sad, Sime Matavulja

I / II / III / IV sprat

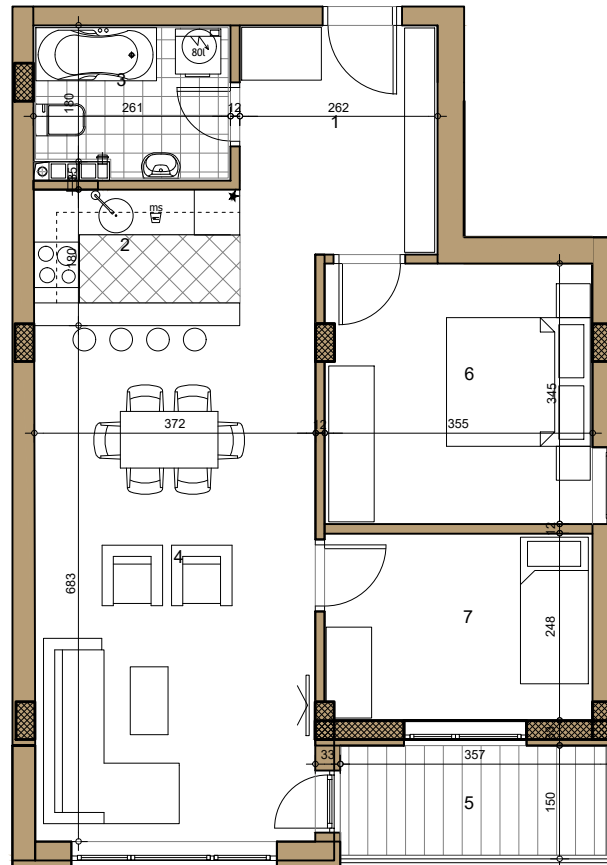
STAN 07/12/18/24

TROSOBAN

67.65m<sup>2</sup>



## 07/12/18/24



07/12/18/24 -TROSOBAN

broj	naziv prostorije	obrada poda	površina (m <sup>2</sup> )
1	ulaz	parket	5.34
2	kuhinja	ker.pl	7.09
3	kupatilo	ker.pl.	4.76
4	dnevna soba	parket	25.59
5	terasa	ker.pl.	5.09
6	spavaća soba	parket	12.15
7	spavaća soba	parket	8.73
<b>UKUPNO NETO</b>			<b>69.75m<sup>2</sup></b>
<b>UKUPNO NETO (-3%)</b>			<b>67.65m<sup>2</sup></b>

