

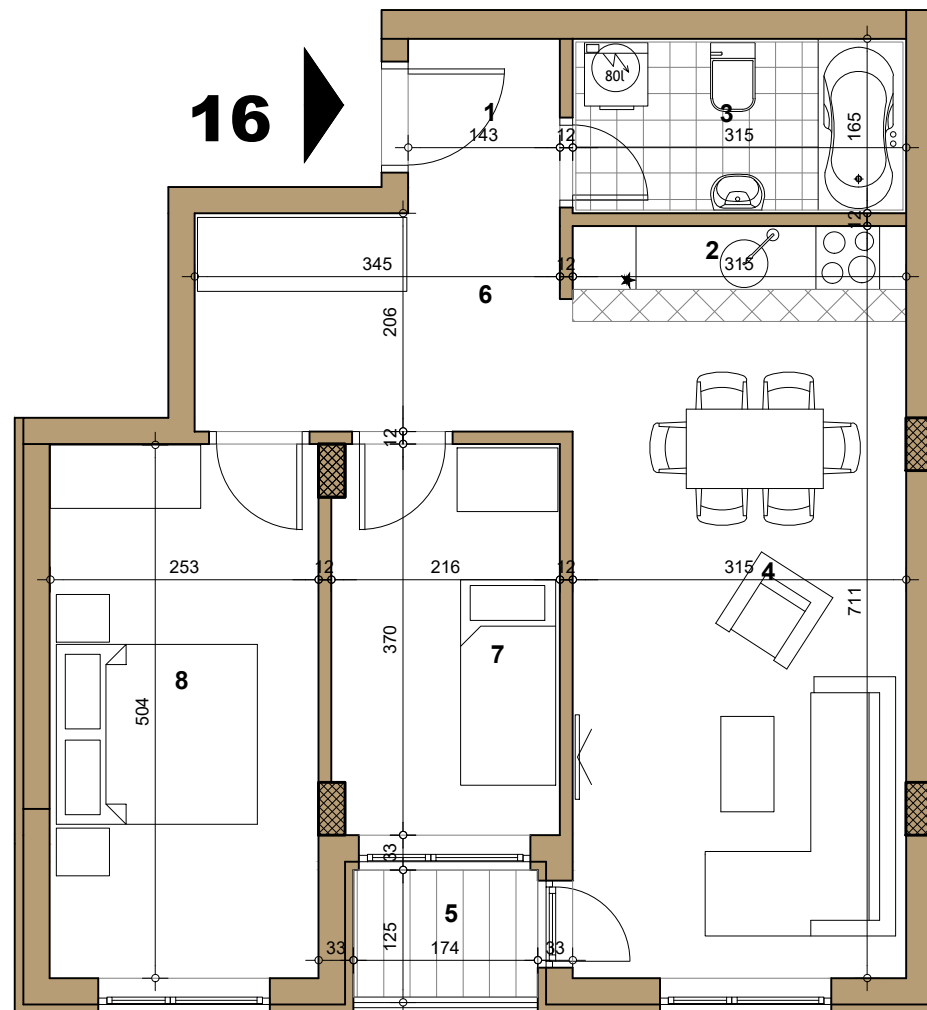
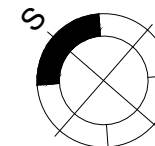
# STAMBENI OBJEKAT

Novi Sad, Sime Matavulja

III sprat ► STAN 16

TROSOBAN

57.74m<sup>2</sup>



## 16 -TROSOBAN

broj	naziv prostorije	obrada poda	površina (m <sup>2</sup> )
1	ulaz	parket	2.37
2	kuhinja	ker.pl.	2.89
3	kupatilo	ker.pl.	5.14
4	dnevna soba	parket	19.55
5	terasa	ker.pl.	2.09
6	degažman	parket	6.83
7	spavaća soba	parket	7.85
8	spavaća soba	parket	12.81

UKUPNO NETO 59.53m<sup>2</sup>

UKUPNO NETO (-3%) 57.74m<sup>2</sup>

