

# STAMBENI OBJEKAT

Novi Sad, Sime Matavulja

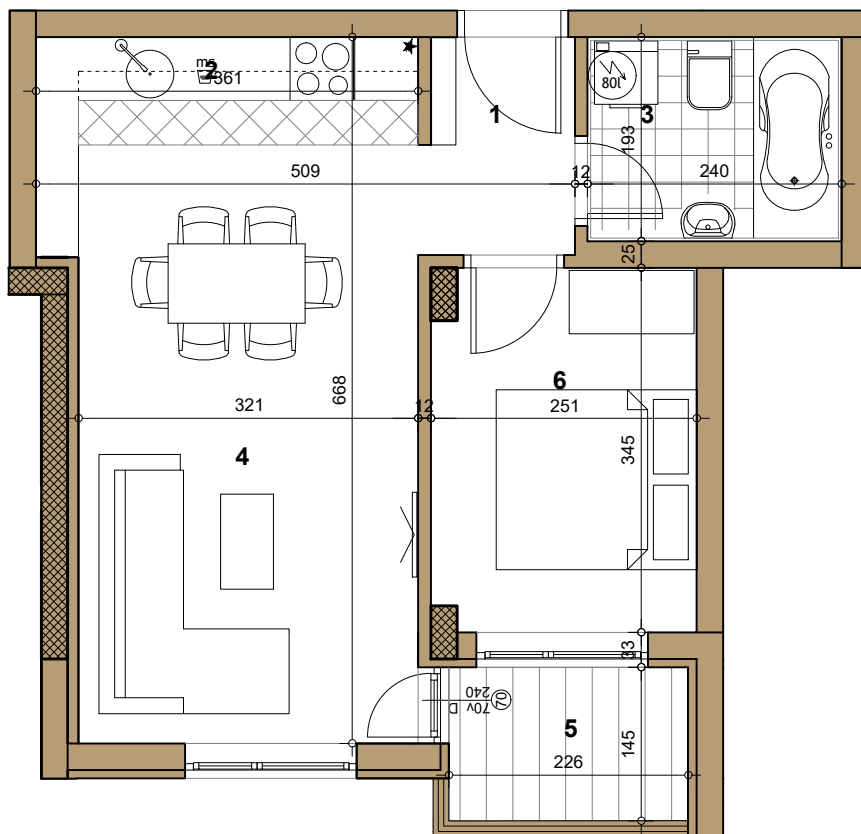
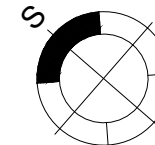
III sprat

▶ STAN 17

DVOSOBAN

40.13m<sup>2</sup>

17



## 17 -DVOSOBAN

broj	naziv prostorije	obrada poda	površina (m <sup>2</sup> )
1	ulaz	parket	2.96
2	kuhinja	ker.pl	3.57
3	kupatilo	ker.pl.	4.35
4	dnevna soba	parket	18.75
5	terasa	ker.pl.	3.28
6	spavaća soba	parket	8.46
UKUPNO NETO			41.37m <sup>2</sup>
UKUPNO NETO (-3%)			40.13m <sup>2</sup>

