

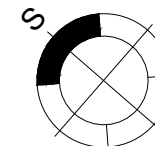
STAMBENI OBJEKAT

Novi Sad, Sime Matavulja

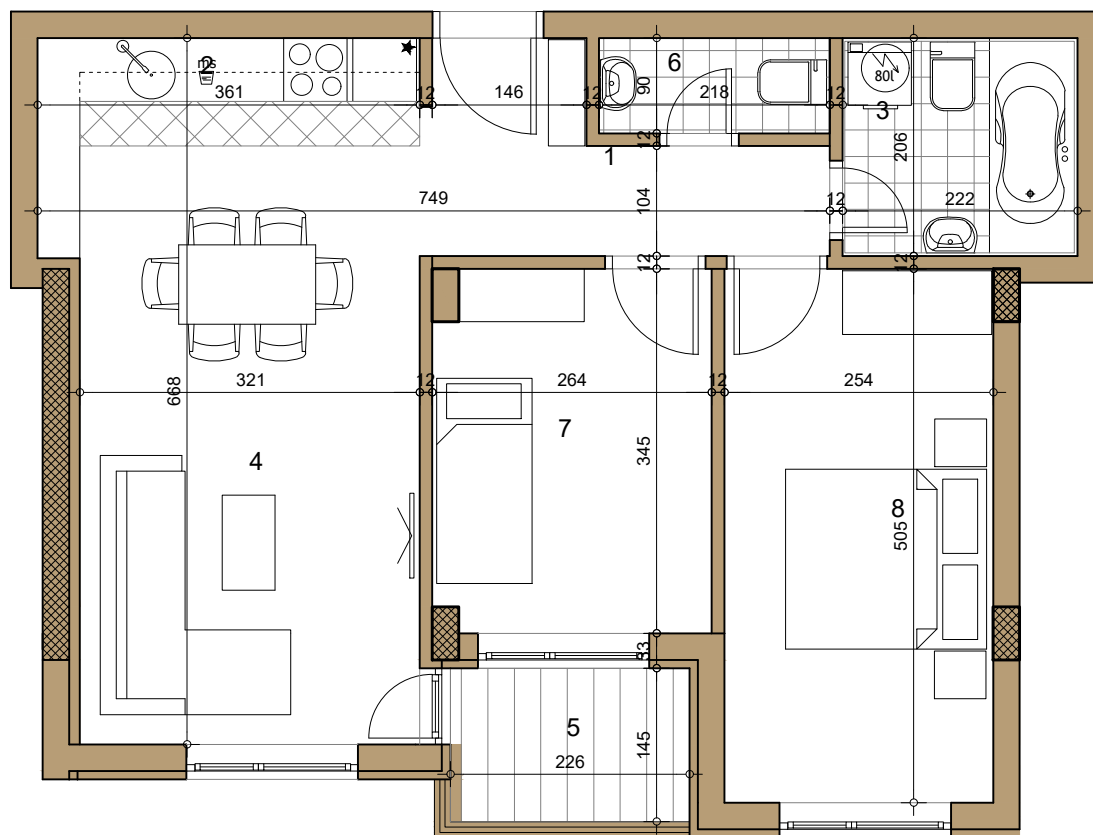
IV sprat ► STAN 23

TROSOBAN

56.71m²



23



23 -TROSOBAN

broj	naziv prostorije	obrada poda	površina (m ²)
1	ulaz	parket	5.04
2	kuhinja	ker.pl.	3.57
3	kupatilo	ker.pl.	4.40
4	dnevna soba	parket	18.48
5	terasa	ker.pl.	3.28
6	wc	ker.pl.	1.94
7	spavaća soba	parket	8.88
8	spavaća soba	parket	12.87

UKUPNO NETO 58.46m²

UKUPNO NETO (-3%) 56.71m²

