

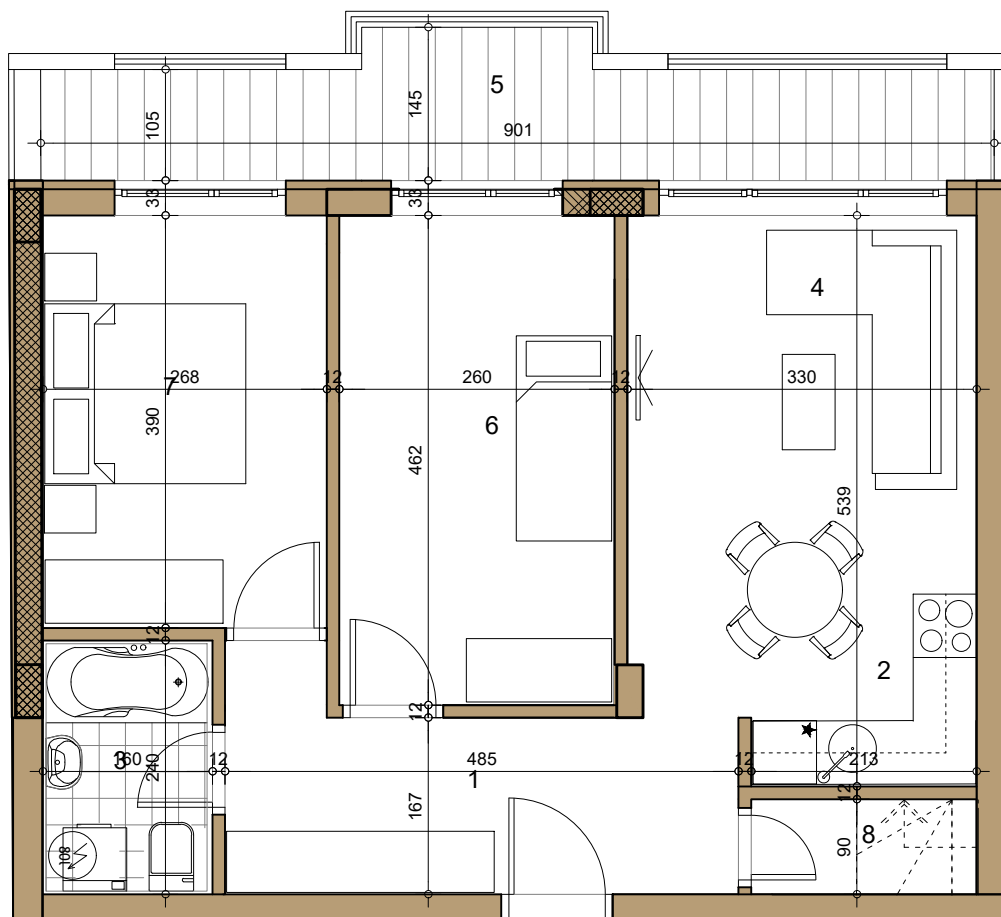
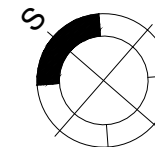
# STAMBENI OBJEKAT

Novi Sad, Sime Matavulja

Potkrovlje ► STAN 25

TROSOBAN

62.43m<sup>2</sup>



25

## 25 -TROSOBAN

broj	naziv prostorije	obrada poda	površina (m <sup>2</sup> )
1	ulaz	parket	7.07
2	kuhinja	ker.pl	2.07
3	kupatilo	ker.pl.	3.79
4	dnevna soba	parket	16.68
5	terasa	ker.pl.	10.35
6	spavaća soba	parket	12.01
7	spavaća soba	parket	10.47
8	ostava	parket	1.92

UKUPNO NETO 64.36m<sup>2</sup>

UKUPNO NETO (-3%) 62.43m<sup>2</sup>

