

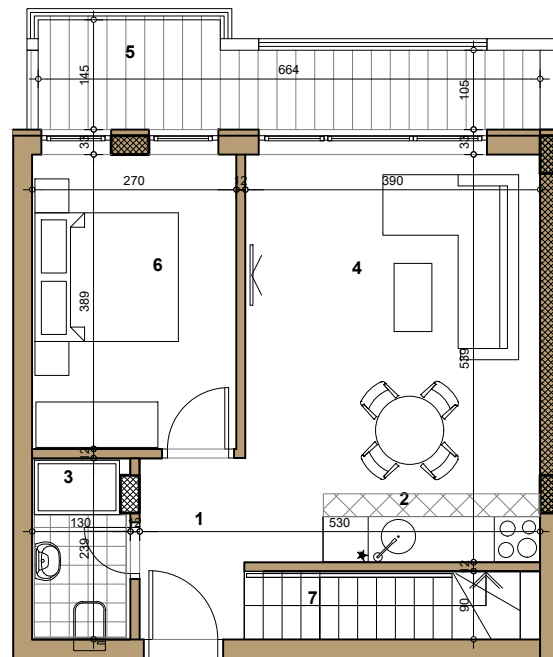
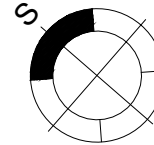
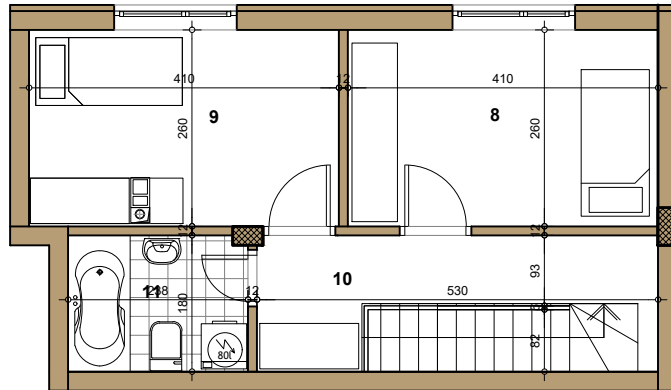
STAMBENI OBJEKAT

Novi Sad, Sime Matavulja

Potkrovlje ► STAN 27

ČETVOROSOBAN

78.95m²



27

27 -ČETVOROSOBAN

gornji nivo

broj	naziv prostorije	obrada poda	površina (m ²)
1	ulaz	parket	3.61
2	kuhinja	ker.pl	5.35
3	kupatilo	ker.pl.	3.08
4	dnevna soba	parket	15.68
5	terasa	ker.pl.	8.06
6	spavaća soba	parket	10.52
7	stepenište	parket	3.28

UKUPNO NETO gornji nivo 49.58m²

UKUPNO NETO (-3%) 48.09m²

donji nivo

8	spavaća soba	parket	10.65
9	spavaća soba	parket	10.66
10	hodnik	parket	6.24
11	kupatilo	ker.pl.	4.26

UKUPNO NETO donji nivo 31.81m²

UKUPNO NETO (-3%) 30.86m²

UKUPNO NETO 81.39m²

UKUPNO NETO (-3%) 78.95m²

