

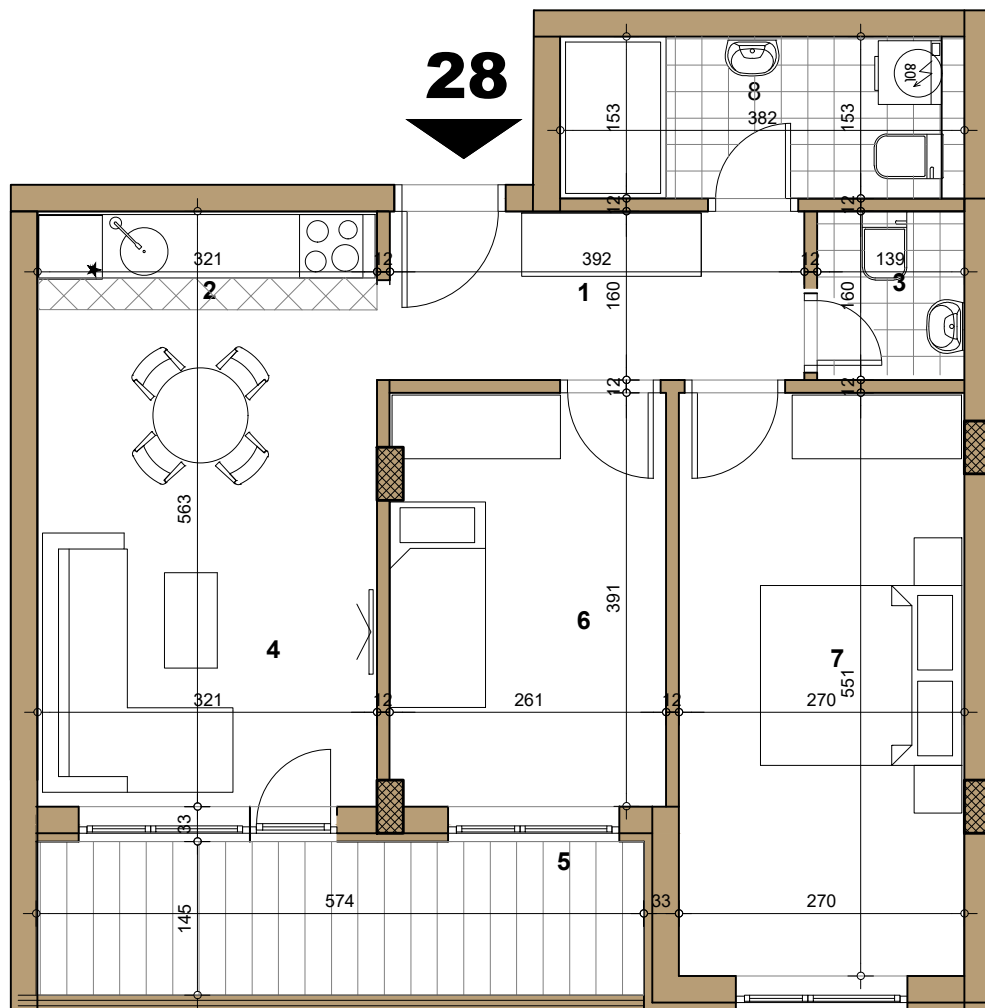
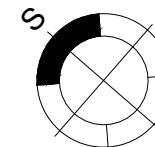
# STAMBENI OBJEKAT

Novi Sad, Sime Matavulja

Potkrovlje ► STAN 28

TROSOBAN

63.41m<sup>2</sup>



## 28 -TROSOBAN

broj	naziv prostorije	obrada poda	površina (m <sup>2</sup> )
1	ulaz	parket	6.18
2	kuhinja	ker.pl	2.89
3	kupatilo	ker.pl.	1.99
4	dnevna soba	parket	15.11
5	terasa	ker.pl.	8.45
6	spavaća soba	parket	10.74
7	spavaća soba	parket	14.46
8	kupatilo	ker.pl.	5.55
UKUPNO NETO			65.37m <sup>2</sup>
UKUPNO NETO (-3%)			63.41m <sup>2</sup>

